

ESCRIBIENTE

P.O. Box 30166
Albuquerque, NM 87190

BOARD OF DIRECTORS

PRESIDENT Margie Disque 298-2237	VICE-PRESIDENT Ron Peterson 323-8753
SECRETARY Catherine Hogan 298-2004	TREASURER Heidi Markham 299-6997

COMMITTEE CHAIRS

Flyer	Lynda Lawrence	890-1028
Fundraising	Esther Feske	255-5958
Ghost Ranch	Margie Disque	298-2237
Hospitality	Betsy Townsend	877-4029
Library	Sue Poucher	401-9532
Mailing	Ellie Murphy	821-6028
Materials	Pat Vizzini	856-5284
Membership	Sue DeWalt	765-1566
Newsletter (editor)	Julie Gray	286-6259
Newsletter (library)	Lynda Lawrence	890-1028
Programs	Jan Florence	281-5771
Publicity	Alma Sanderson	265-0015
Refreshments	Donna Fastle	268-7772
Shows	Caryl McHarney	255-7883
State Fair	Luanne Chowning	453-0138
Workshops	Jan Florence	281-5771

Escribiente is a non-profit organization of persons dedicated to the advancement and promotion of calligraphy. Meetings are held at 6:30 pm on the first Wednesday of each month, except for January and July. December's holiday meeting will be announced. We meet at Manzano Mesa Multi-generational Center (southwest corner of Elizabeth and Southern). Yearly dues are \$25 for in-state members and are payable May-July. Benefits of membership include: receiving the newsletter, book, tape or DVD checkout from our lending library, discounts to attend workshops, and discounts at local art, paper and frame shops. Dues should be mailed to: **ESCRIBIENTE, PO Box 30166, Albuquerque, NM 87190.**

Escribiente's Newsletter is published quarterly, supplemented by monthly flyers. Articles from this newsletter are under copyright, and may not be reprinted without permission from the editor. Do you want your work featured in the Newsletter? Or do you have an article of interest you would like to publish, or an event you would like to publicize? Send information to Julie Gray at 96 Paa-ko Drive, Sandia Park, NM 87047.

*Oh my goodness! What an unusual problem to have!! This issue is so chock full of gorgeous artwork from classes, workshops and conferences, I have 'forced' Lady Pres Margie to forgo her President's Letter, which will return next issue with HER report on her class from Conference this year. Thanks for the sacrifice, Margie!
Your Editor*

Neuland and Versals!

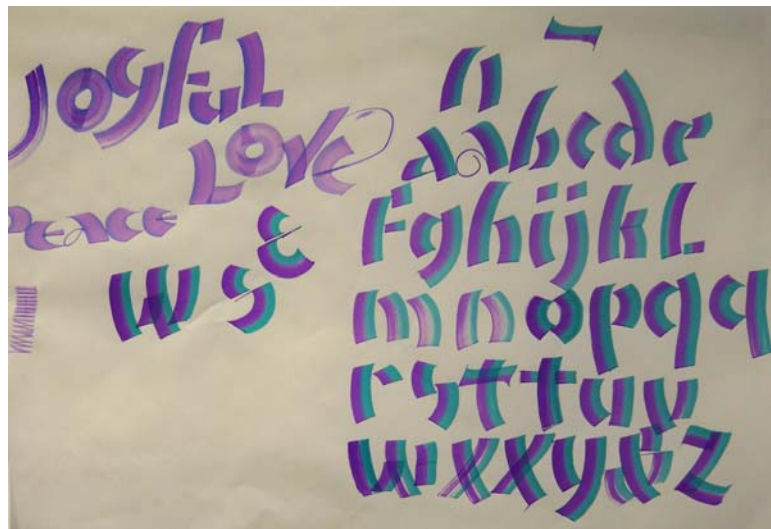
This year at the Calligraphy Connection 2009 conference held in Minnesota, I took two classes, *Neuland*, *Cuneiform and Beyond* from Carrie Imai and *Versal Variations* from Connie Furgason.

In my first class with Carrie, we learned many different alphabets and different variations of each. Carrie kept us busy throughout the class and beyond. Carrie's examples that she shared with us were excellent. She encouraged us to go beyond our comfort level and told us to use good paper. She wanted us to

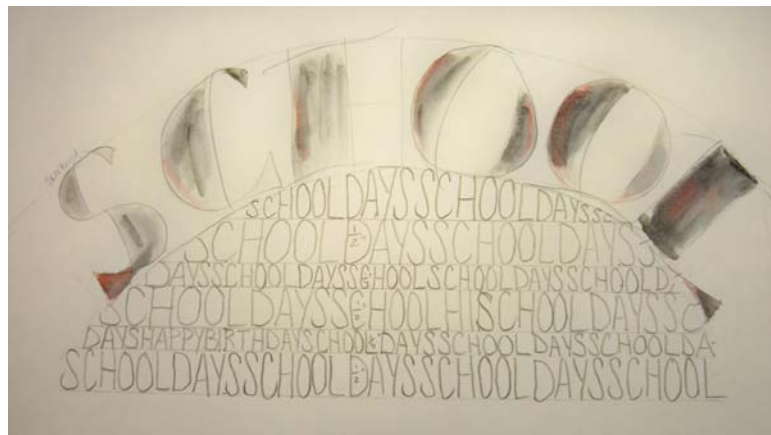
be confident in what we were doing and to excel in our work. Carrie is an excellent instructor and I look forward to taking more classes with her in the future.

In Connie's class we started with a basic Roman structure, where we expanded it to become a Versal. We decorated them in many different ways, using watercolors to just a basic gray scale coloring. I enjoying taking Connie's class and being able to decorate letters in many different ways.

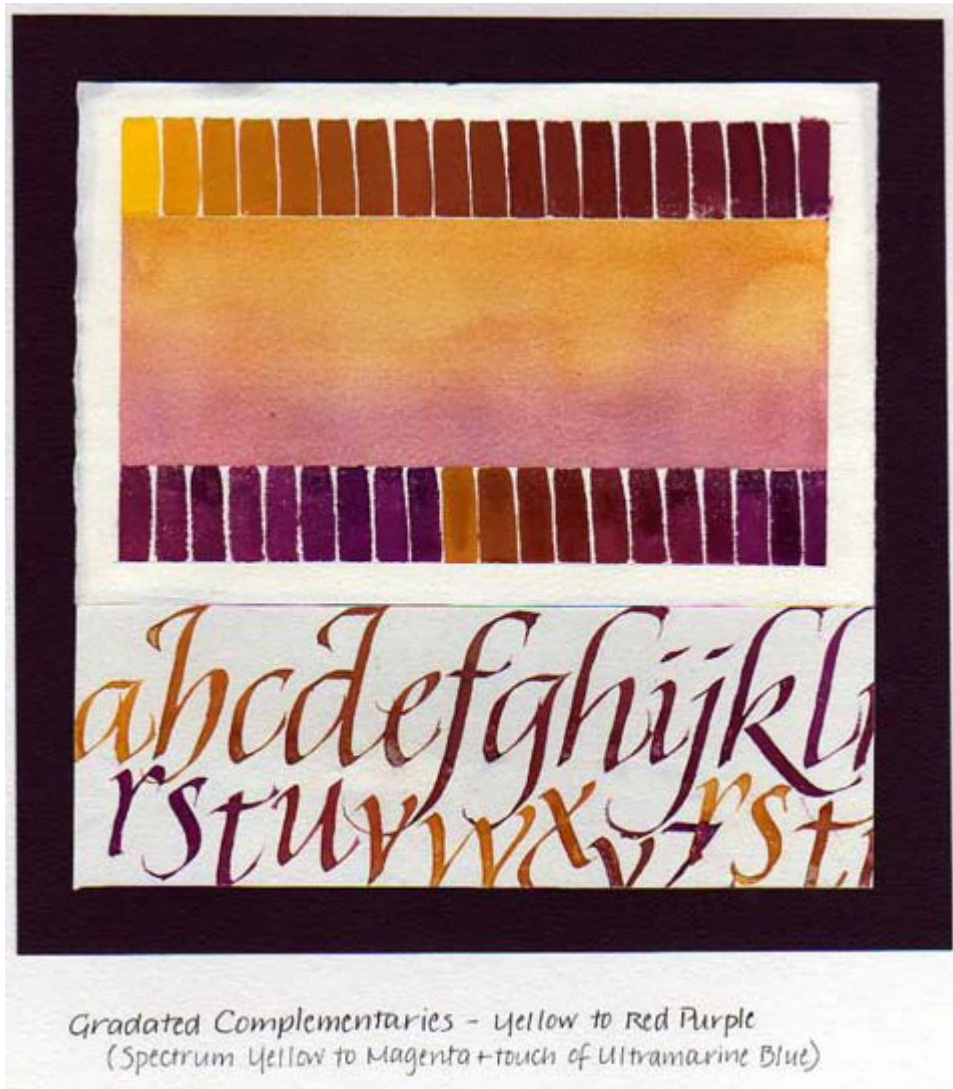
Francis Stoppiello



Neuland from Carrie Imai's class



Versals from Connie Ferguson's class



Red and Blue Make Purple - Or Do They?

Like many of you, I learned simple color theory back in grade school. There are three primary colors: red, yellow and blue. These somehow just exist because you can't mix them like you can the secondary colors: orange, green and purple. Red mixed with yellow makes orange, yellow and blue make green, and blue and red make purple, resulting in a beautiful rainbow of clear bright colors. What could be simpler, right? Over the many years since then, my success in actually mixing these colors has been haphazard at best. My oranges were often burnt, my greens dull olive and my purples...well, they could best be described as mud. My answer to these dilemmas was to buy tubes of or-

angey orange, brilliant green and velvety purple already mixed for me.

Sheila Waters' Double Primary Palette class at Calligraphy Connection 2009 was a real eye-opener for me! While I had heard of the double primary palette, I had not spent much time exploring the concept. After all, I already had all those tubes of paint! The double primary palette consists of two reds: a warm orange red and a cool blue red; two yellows: a warm golden yellow and a cool greenish yellow; and two blues; a cool greenish blue and a warm red blue. We spent the first 2½ days on color theory exercises - mixing colors and making various gradation charts. I learned that from these six

colors, plus black and white, I truly could mix any color I could imagine, yes, even brilliantly clear greens, oranges and purples.

The second half of the week was then spent using the pigments experimentally, making washes, creating textures and using resists. The demos and tips on laying gold that Sheila included were added bonuses.

There were so many more exercises and ideas to try than we possibly had time for in class! I have much to explore here at home in my studio.

Janice Gabel

Fabulous Flowers, Ferns, and Fun!!

Jan Florence is well known about town for her fabulous roses and the #5 ‘automatic’ pen she uses to make them.

Jan brought a bunch of us together for a workshop in the basement of Artisans on a Saturday in July. She’s always eager to share the technique she learned from Victoria Pittman at Ghost Ranch. There’s nothing automatic about it! You really have to have nimble fingers and wrists to make the twists and turns needed to produce the flowers, leaves, bam-

boo—all the stuff you might find in nature. You are drawing the essence of the flower, and it is certainly not meant to be photo-realistic.

The pen leaves its mark while being held in an upright position. It’s not for the faint of heart! We made ferns and roses and leaves and cattails. Many of your strokes will be on the outside edge (corner) of the pen for grasses and light strokes. Gently and gradually lift your pen and keep going airborne for your entrance and exit strokes - like an airplane taking off or landing.

The magic happens when the watercolor has been allowed to dry and then just slightly moistened with a spray or just 2-3 drops of water to soften. She dips the pen in water, shakes off the excess, and then “scrapes” the dried, (but ever-so slightly moistened) color with the pen. A different color on each corner of the pen can result in a nice blend/variation. Too much water and you lose the effect. However, if light, pastel, washy colors are your aim, use less color and more water.



Quality art paper is recommended, but this technique will work on any paper. The textured watercolor papers will produce an “artsy” look with holes and sprays and splatters. It was great fun to look around the room and see all the variations, as each of us had added our own twist to the technique.

Lynda Lawrence

IAMPETH makes 'music' with the pen in Nashville

The International Association of Master Penman, Engrossers and Teachers of Handwriting (IAMPETH) Convention was held in Nashville, Tennessee this year. This was the 60th convention and was full of interesting classes and a wonderful group of people. All during the convention, people kept commenting how 'giving' everyone was at the convention. People who did not know each other soon became friends and shared their talents. Sharing was the main focus for everyone,



which was truly a great thing to see and be part of with this group of artists.

The classes were many and ranged from pointed pen to drawing a c a n t h u s leaves. There were several classes I attended and hopefully the pictures below will be self-explanatory of what they were about. Of course, there were classes held at the same time and selecting one was very difficult. However, selections had to be made.

The banquet was held on Saturday, the last day of the convention. The interesting part of the banquet was that different Guilds could decorate their tables in some form of calligraphic art. What a wonderful sight to see! The creativity was unbelievable. I do have some pictures to share at another time. The tables were judged and a winning Guild was chosen. After the banquet, the next President of IAMPETH, Vivian Mungall, introduced where next year's convention will be held. A secret until the announcement, the magical location will be in Orlando, Florida. The hotel is just outside Disney World and the rooms are an unbelievable \$89.00 a night!

Bill Kemp



BLIND EMBOSSED YOU CAN SEE!



Bill Kemp
(*'Learning' is shadowed with pastels*)



Janice Gabel



Lynda Lawrence



Trish Meyer



Jan Florence
(*outline embossed on vellum paper and colored on the back*)



Francis Stoppiello

So, I'm a newbie at this great class taught by Julie Gray. There I am, out of my depth with 13 other members of *Escribiente* who are all accomplished calligraphers. Was I overwhelmed? Was I nervous? You bet I was, but how was I to learn anything about this craft that I admire and love without jumping in with both hands?

If you are new to this group or even a member who hasn't taken a class from any of our members, please, please sign up for the next one! (Jan Florence's class of making flowers with an automatic pen was also a good one [see page 4]).

Here's what I learned:

- You cannot make a mistake and be embarrassed for it. (I did the fourth step backwards and still stayed until the end.)
- You will find everyone will share tools, tips, suggestions, and material without being asked or being too busy to help.

- The atmosphere is both relaxed and intent at the same time... everyone working at their own pace.
 - Comments during the work session are funny and sometimes a wee bit off-color. It is a FUN time.
 - Watching an artist like Julie demonstrate what you need to do is just the ticket to get you moving in the right direction.
- Embossing is the process of creating a three dimensional image or design in

paper and other ductile materials. It is typically accomplished with heat and/or pressure. The process we used is "blind embossing" because no ink is used in the making of letters, and it is done by hand.

Walking around the room after the class viewing everyone's work was an experience I will not soon forget. These people, these members of *Escribiente*, are truly accomplished in the art of calligraphy; but even more so are they original in expressing it.

I won't forget the fun, the comradery, the reparté between Jan and Francis, the help and encouragement I got from Margie and Julie, and the laughter we all shared in one unforgettable day.

Nancy Napier



Margie Disque



Ginger Larkin



Sue DeWalt



Pat Vizzini (embossed Neuland and shadowed with colored pencil)



Catherine Hogan



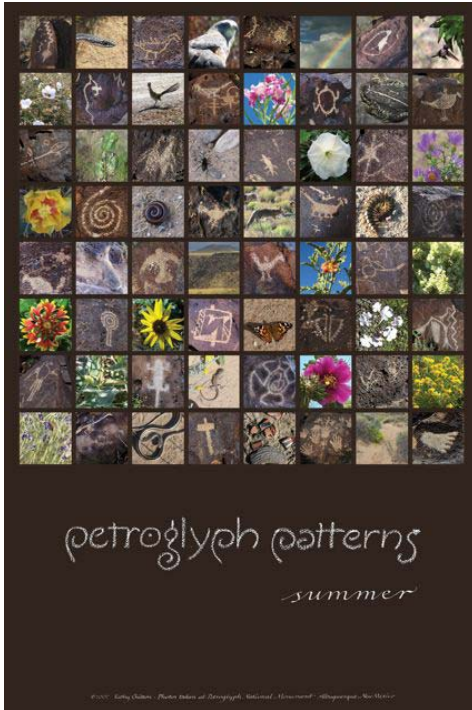
Julie Gray



Nancy Napier



Caryl McHarney (BE is drawn first, then 'yourself' is embossed on top of it, then rest is lettered last) 7



Petroglyph pattern summer RGB

skill and knowledge and sensitivity of these colleagues has been extraordinary. Watch for 20th anniversary events!

What hands are your favorite, and which one(s) would you most like to pursue?

My right hand is my favorite in spite of the fact that it is calloused, garden soil



Petroglyph pairings

encrusted, ink stained, and squat. I try to use my left hand for calligraphy too, with

much difficulty. Ohh - you meant calligraphic hands. It's hard to beat the grace of Italic, but I am ready to try anything.

Are you interested in any other art medium?

Calligraphy lead me to pen and ink drawing and eventually brought me to color with the media of oil pastel and photography.

What does Escribiente mean to you?

Long ago, my daughters asked me, "Are all calligraphers nice people?" I had to answer "Yes!" They had been to many Escribiente meetings and had come to this conclusion themselves. What a group of generous, talented people! Thanks.

What do you plan to do or see as a goal for your calligraphic talents?

I find that I spend very little time doing calligraphy these days as photography, family and community take up more of my time. I certainly hope and plan to get back to the drawing board. I read the sign that says, "Go to your studio and make stuff."



Au pair



Graceful Envelope Contest Winner

Julie Gray was one of the winners of the 2009 Graceful Envelope Contest, sponsored by the National Association of Letter Carriers and administered by the Washington Calligraphers Guild. This year marks the 15th year of the contest, and the theme was "Addressing the Environment." Out of all the entries received from the US and many countries, 12 were selected as "Winners" with one "Best of Show" and 18 were given the distinction "Honorable Mention." The winning envelopes will be on display beginning in October in the lobby of the National Association of Letter Carriers building in Washington, DC. The exhibition is also online at www.calligraphersguild.org.

The Letters Home Project

In the last issue of the Newsletter, Sarah Coca asked Escribiente members for help donating items for her project to send cards to soldiers who are currently serving overseas. Here is a detailed list of what she needs and a website where you can go to see Sarah explain her project.

Writing Materials: greeting cards for all occasions including holidays (with or without envelopes), stationery (with or without envelopes), copy or scrapbook paper (any sheets, colors or leftover scraps of any size or kind), gift wrap (rolls or sheets), envelopes

Labels: self-adhesive white address labels (size 5160 or 8160) and/or return address labels (size 5167 or 8167)

Cardstock: 80 lb. or higher (coated or uncoated), preferably white though pale gray, light beige, ivory or tan acceptable

Adhesives: Scotch tape, double stick tape, Mod Podge, Elmer's Washable School Glue Sticks (purple sticks that dry clear)

Magazines: Bliss By Victoria, Costal Living, Country, Country Living, Country Living Gardening, Martha Stewart Living, Mary Engelbreit's Home, Midwest Living, Mountain Living, National Geographic Adventure, Real Simple, Romantic Homes, Sunset (after 2006), Town and Country Travel, Travel and Leisure, Victoria

Other supplies: ballpoint pens, pencils

All donations can be made at *Learning Is Fun* at Menaul and San Mateo in Northeast Albuquerque. Anyone with questions can call Sarah Coca at: **505-803-7940** or email: lettershomeproject@yahoo.com

For the link to the video broadcast on KOAT - Channel 7 that was broadcast on Sunday 7/26/09 at 10 pm, go to: <http://www.koat.com/video/20186207/index.html>. For a link to the supplies that are needed, go to: <http://www.koat.com/asseenon/20186087/detail.html>

Thank You!

...to those who contributed to this issue... Margie Disque, Francis Stoppiello, Janice Gabel, Lynda Lawrence, Bill Kemp, Nancy Napier, Trish Meyer, Ginger Larkin, Pat Vizzini, Sue DeWalt, Jan Florence, Caryl McHarney, Catherine Hogan, Kathy Chilton, Sarah Coca, and my trusty proofreaders, Fred Gray, Bill, Linda and Jennifer Kemp. *Thank you!*



OPPORTUNITIES

**Color It Luscious...with Pencil!
November 14th & 15th, 2009**

2 days with NANCY CULMONE

Pencil techniques for calligraphers. Explore colored pencil techniques. You'll learn color blendings, shading, hatching, layering, creating textures, fine detail work, bold applications and the way pencils respond to a variety of papers. Our class menu includes time-honored artist's methods and new tricks. Create a small technique sample book, a portfolio of images, and experiment using pencil by itself and in combination with pens, various tools & other media.

Contact Jan Florence at 505-281-5771



**Landscape & Lettering:
A week under the stars**

**Laurie Doctor at Ghost Ranch
Nov 9-15, 2009**

Horizon is defined as "the apparent juncture between earth and sky." This universal phenomenon provides limitless possibilities in terms of both metaphor and painterly ideas.

The act of writing is full of pleasure that increases with skill. We will explore lettering through a collection of writing implements and a series of experiments based on principles that define landscape; (e.g. distance, horizon, texture, movement and pattern).

This workshop is part of a series that investigates the ways that the universal elements of line, as they are found in landscape, can be reflected through writing, drawing and painting. The exercises in this class lead one into more abstract expressions of writing with a variety of tools and materials in a contemplative atmosphere.

The cost for the week (room, board and workshop) is \$1500. If we have 8 or more students, \$1425.

Laurie Doctor
www.lauriedoctor.com

*Welcome
New Member!*

Jett Curtis
717 Tulane Drive NE,
ABQ, NM 87106
363-6202

Error!

*In the minutes from January 7th,
the Treasurer's Report should have
an amount of \$4884.00 instead of
\$884.00. We regret this error.*

A little plug here, for our wonderful
newsletter printer!


SPEEDZONE
Print and Copy
6000 Lomas NE

Support them with all your copying
and printing needs.

They really are good...and fast!
Contact: Frank Horner or
Nanette Ely-Davies 262-2679

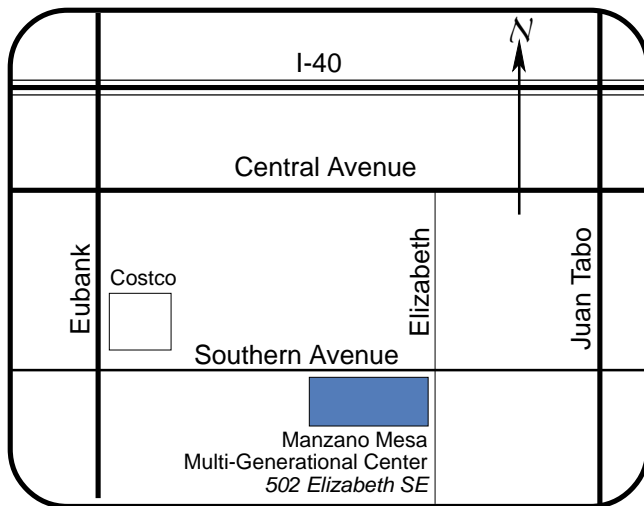
UPCOMING ESCRIBIENTE MEETINGS...

Like everything else in this world, these are subject to change without notice, although we will try to give you as much notice of changes as we can!

<p>September 2, 2009</p> <p>Bring the popcorn! Come watch videos of some of the best techniques in the business.</p>	<p>October 7, 2009</p> <p><u>KATHY CHILTON</u> presents POP-UPS!!! Everything you ever wanted to know... and then more!</p>	<p>November 4, 2009</p> <p><u>ALPHABET SOUP!</u> Another great *round robin* Get help with the letters you might be having trouble with. <small>(with which you might be having trouble...whatever)</small></p>
	<p>January 6, 2010</p> <p><u>NO MEETING</u></p>	<p><i>Watch for monthly flyers and postcards to keep you up to date on each Escribiente meeting!</i></p>

Meetings

Members and guests of Escribiente meet the first Wednesday of the month at 6:30 pm. (no meetings are held in January, July and December). They are held in the Manzano Mesa Multi-Generational Center at 502 Elizabeth SE.



Meeting Kits

Bring these items to every meeting. If other supplies are needed, it will be announced in the monthly flyer.

6" Ruler

Glue Stick

Pencil(s)

3 Colored Pencils

Eraser

(Mistakes?? Never!)

Micron Pen or equivalent

(Any size)

Scissors

(Small...to fit in your kit)

Felt Calligraphy Pen

(Any size or color)

Pad for taking notes

Anything else you are comfortable bringing that you can't do without.

NO INK NECESSARY!!

ANY SHOW & TELL YOU HAVE TO SHARE!

Be sure to see your
Newsletter

and other interesting
items related to calligraphy
on Escribiente's NEW Website:
<http://www.escribiente.org>

Deadline for submissions for upcoming 2009 issues of Escribiente...

WINTER ISSUE: (mailed in December) deadline NOVEMBER 1ST

SPRING ISSUE: (mailed in March) deadline FEBRUARY 1ST

SUMMER ISSUE: (mailed in June) deadline MAY1ST

Any information you have is welcome! Classes you've attended, artwork you have done, tidbits of news, awards you've won(!), babies born(!!!), book reviews, a favorite material you are using you can't wait to tell everyone about, upcoming shows, classes you are teaching, etc...etc... This is YOUR connection with the calligraphic world in Albuquerque and beyond...we welcome your input! Mail to me at: Julie Gray, 96 Paa-ko Drive, Sandia Park, NM 87047. I WILL return your stuff!