
ESCRIBIENTE Spring, 2011

*Life isn't about
waiting for
the storm to pass...
it's about learning
to dance
in the rain.*

VIVIAN GREENE

N E W S L E T T E R

ESCRIBIENTE is Albuquerque's Calligraphic Society open to anyone interested in the fine art of beautiful lettering.

A Word from Your *President*



Calligraphy is a satisfying activity to us in many different ways.

Of course, there are those of us who make a bit of money producing pieces either to order or for that which we have already completed. Unfortunately, there are very few positions for calligraphers to make their living plying our trade. Many outstanding scribes would love that.

We all enjoy having our work appreciated by others, and that happens to most of us more often than we feel it's deserved. The accolades that we receive from non-calligraphers is understandable. What we see as a horribly malformed "s" looks perfect to the untrained eye.

The positive reinforcement that we receive from fellow calligraphers, however, is especially meaningful, as we all have been trained to observe the good things (as well as the bad) in each others' works. We probably learn more from others than we do from books. Calligraphers tend to be willing, even anxious, to share techniques that we've discovered.

Sometimes, we see glaring errors where they're really quite minor, and fail to see anything at all good in a piece that we've completed. We're our own worst critics. Luckily, the pieces we make "cure" overnight. Has there ever been a piece that you completed that doesn't look better after it has been set aside overnight?

There are more formal awards as well. The State Fair competition comes immediately to mind. Whether you enter anything or not, stop by the display and listen to what people are saying. There are other opportunities, like the Graceful Envelope, where creativity can run to it's wildest!

We also have blocks to doing calligraphy. My particular block is gathering everything I need and preparing to start. I may spend 15 minutes getting ready. Then I'll get involved in completing it, maybe looking up after I'm finished to find I've spent 3 hours, but that time seems much shorter than the few minutes spent in preparation. Calligraphy as relaxation works too.

I look forward to seeing you all at our upcoming meetings and workshops.

Ron Peterson

ESCRIBIENTE P.O. Box 30166 Albuquerque, NM 87190

BOARD OF DIRECTORS 2010-2011

PRESIDENT • **Ron Peterson** • 323-8753
VICE PRESIDENT • **Theresa Varela** • 480-9628
SECRETARY • **Glo Cantwell** • 828-0131
TREASURER • **Nancy Napier** • 281-9244

COMMITTEE CHAIRS 2010-2011

FUNDRAISING • **Esther Feske** • 255-5958
GHOST RANCH • **Margie Disque** • 298-2237
HOSPITALITY • **Betsy Townsend** • 877-4029
LIBRARY • **Sue Poucher** • 401-9532
MAILING • **Ellie Murphy** • 821-6028
MATERIALS • **Pat Vizzini** • 856-5284
MEMBERSHIP • **Margie Disque** • 298-2237
NEWSLETTER • **Julie Gray** • 918-1948
MONTHLY FLYER • **Lynda Lawrence**
PROGRAMS • **Pam Beason** • 792-9155
PUBLICITY • **Alma Sanderson** • 265-0015
REFRESHMENTS • **Donna Fastle** • 268-7772
SHOWS • **Theresa Varela** • 480-9628
STATE FAIR • **Theresa Varela** • 480-9628
WORKSHOPS • **Jan Florence** • 281-5771
MINI-WORKSHOPS • **Catherine Hogan** • 298-2004

COVER ART

THE BEAUTIFUL ART ON THE COVER OF THIS ISSUE IS DONE BY
PAT VIZZINI. SEE ARTICLE ON PAGE 5.

Escribiente is a non-profit organization of persons dedicated to the advancement and promotion of calligraphy. Meetings are held at 6:30 pm on the first Wednesday of each month, except for January and July. December's holiday meeting will be announced. We meet at Manzano Mesa Multi-Generational Center (southwest corner of Elizabeth and Southern). Yearly dues are \$25. for members and are payable May-July. Benefits of membership include: receiving the newsletter, book, tape or DVD checkout from our lending library, discounts to attend workshops, and discounts at local art, paper and frame shops.

Dues should be mailed to: Escribiente, P.O. Box 30166, Albuquerque, NM 87190. Escribiente's Newsletter is published quarterly, supplemented by monthly e-flyers. Articles from this newsletter are under copyright, and may not be reprinted without permission from the editor. Do you want your work featured in the Newsletter? Or do you have an article of interest you would like to publish, or an event you would like to publicize? Send information to: Julie Gray at 96 Paa-ko Drive, Sandia Park, NM 87047

Creativity at Letters-California Style Conference, 2011

Ginger Larkin and I were lucky enough to get into Janet Takahashi's Journaling Class, although neither of us do any journaling. We were hoping for some techniques and hints. We were delighted! Janet supplied the cut pages for the book we were making to save time. In addition to the many supplies we brought, Janet provided boxes of supplies to share with us. As a result we wanted for nothing but time.

Our book was an ABC book. We put one letter on each page and then added reminders of art techniques and things starting with that letter to the page (i.e. B page add a border, Q page add a quote). To save time, we traced our main letters. We learned to use inserts and how to attach things to the page, make slots and do a 'map fold.' We had several experiences with sketching, using a sketching pencil for washes and lots of watercolor. She said to "describe something fully with 5 senses and describe each sensation." That sounds like journaling to me so I am still working on that.

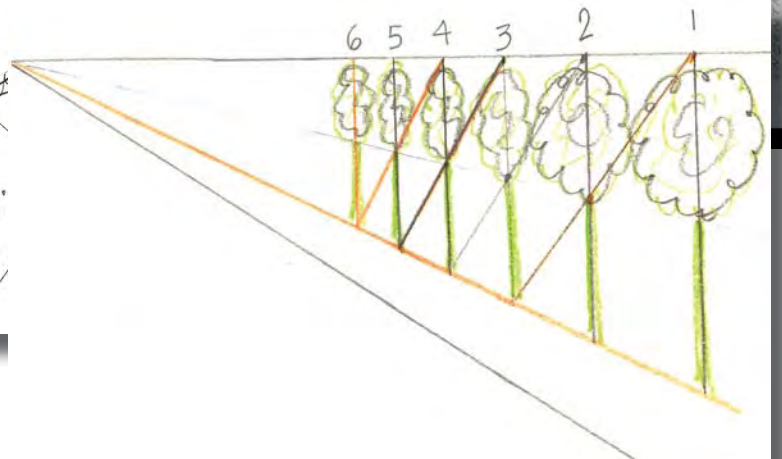
Jan Florence



Artwork by Jan Florence



Artwork by Ginger Larkin



Washes and Waffles... Letters-California Style 2011

Working with Randall Hasson is like working with a master painter. Just go see his work on his website at: www.randallhasson.com. His forté is working in thin layers of acrylic and building them up so you get the dimensional feel of depth. This is what we did in his class at Letters-California Style in February. It was an honor to be able to be in this class, even though it really was outside my comfort zone.

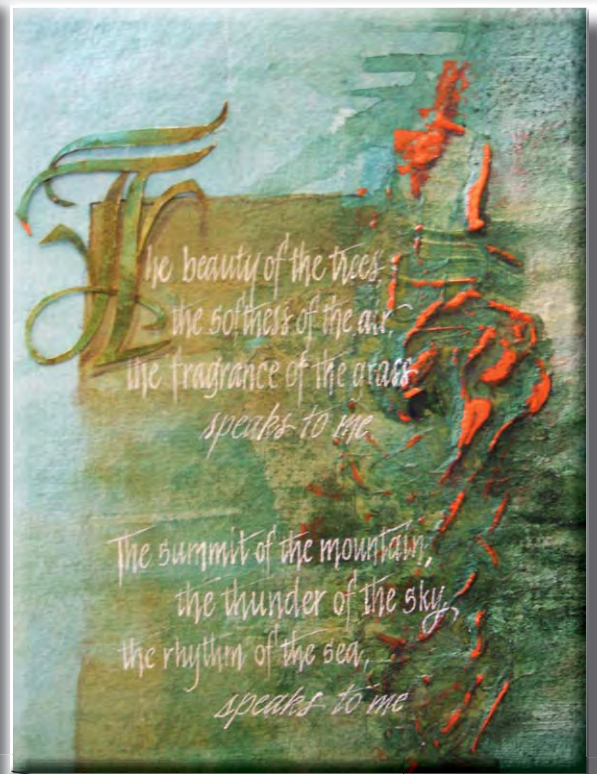
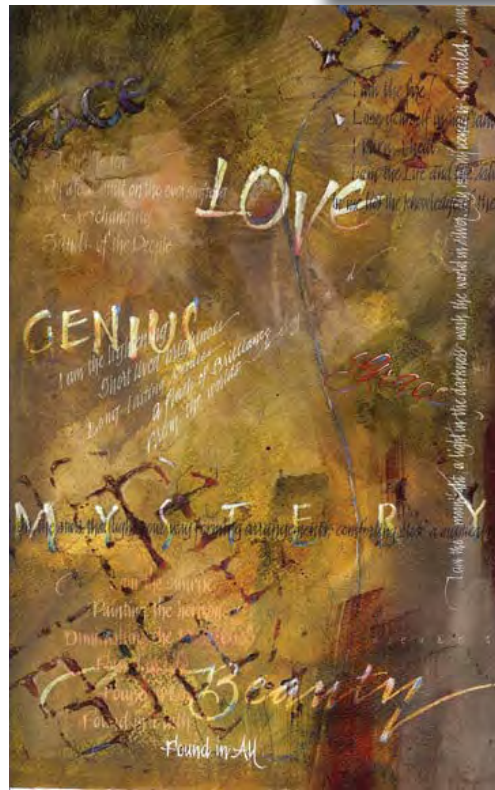
Starting with layers of washes of acrylic, and adding in matte medium or gesso (great for covering up mistakes!), fiber paste, gel medium (see middle right with orange on it), or sink art. Sink art is lettering on the paper in Sumi ink and before it's dry, washing it out (see top picture). We gave the paper (and some worked on canvas) a good base.

From there we came up with a general layout and lettered in different sizes, tools and colors, all using acrylic paint, or acrylic ink. This gave it more dimension.

Now you are probably wondering what the reference is to waffles in the title! Well, the class wasn't all serious...and with

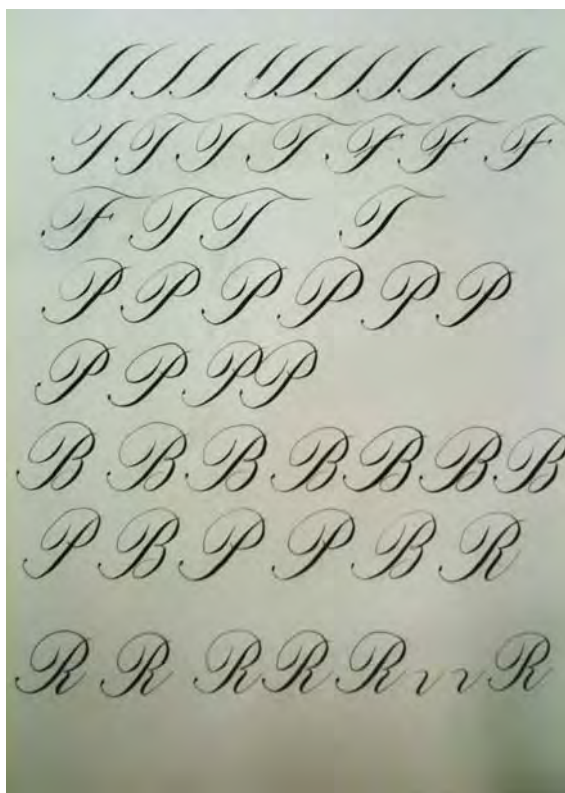
Randy's personality, you never know what he is going to be up to next. One morning he made a waffle for breakfast, but instead of eating it, he brought it to class, and we let it dry for a day, then put paint on it, and pressed it onto our work...voila! Instant waffle pattern stamp! Note the above middle piece....see the waffle pattern? You just never know till you try!

If you get a chance, next time you go to Santa Fe, stop in Randy's studio and see his work. It's really amazing. And he loves to have calligraphers visit. Plus, he really puts on a great class.



Julie Gray

Copperplate Class at Letters - California Style 2011



Pat Blair is a Master Penman (Penwoman?) which was awarded to her recently by the International Association of Master Penman, Engrossers, and Teachers of Handwriting. She holds the position of Chief Calligrapher at the White House in Washington D.C.

The class was designed for those students who had a basic knowledge of copperplate. We started the class with shaded stroke exercises. We practiced on Canson Pro Layout Marker pad, used sumi, Moon Palace or McCaffrey's Black ink; in my case I used a Gillott 303 nib. We also used a good quality black paper and used McCaffrey's Ivory ink which is not as bright as Bleed Proof White. We practiced with gradual pressure and shaping of the letters which give the lettering its distinctive look.

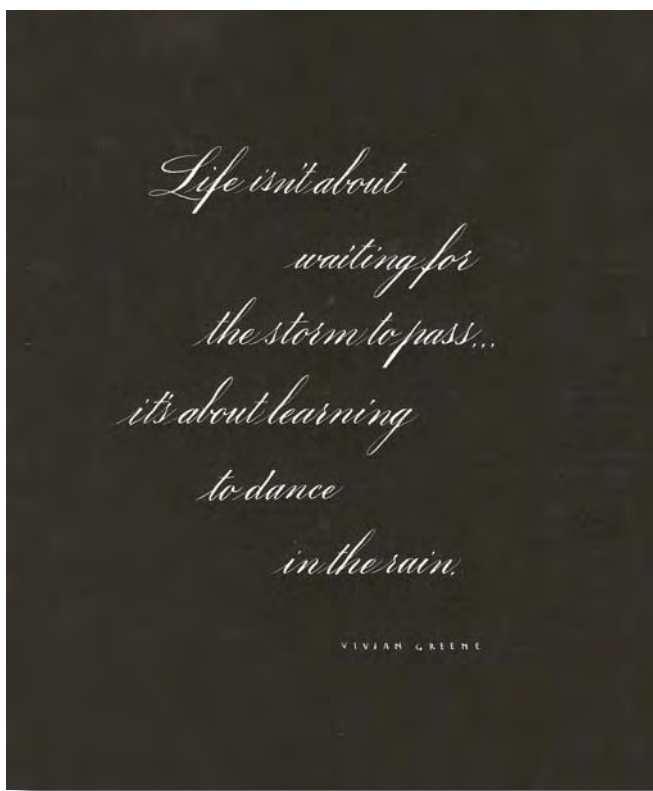
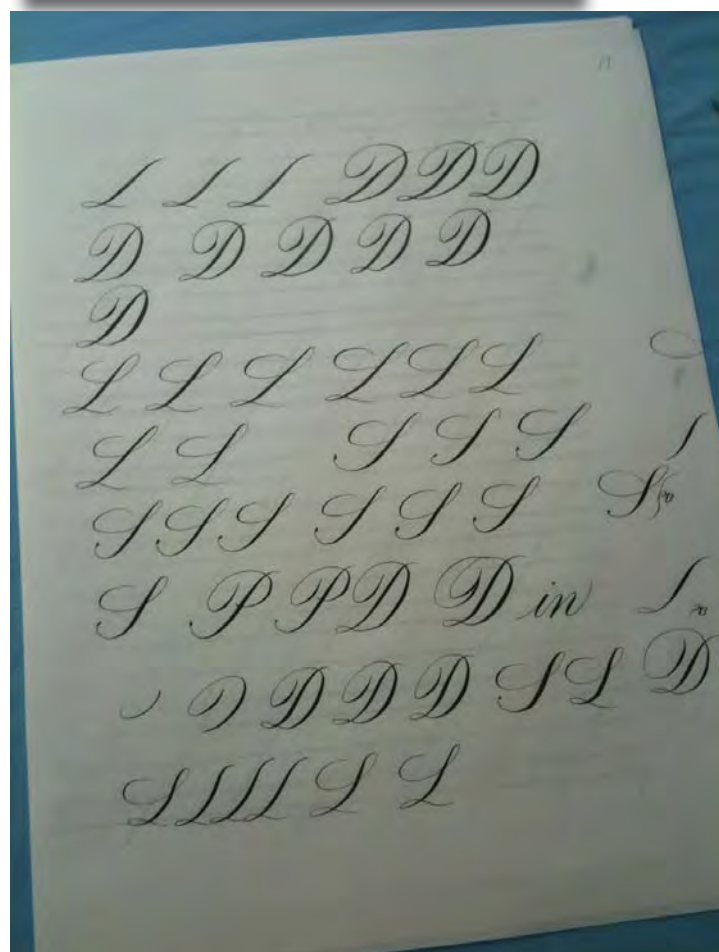
We concentrated on lower-case letters and spacing, then practiced capitals. She moved on to flourishing and freeform style then showed us examples of other variations of pointed pen.

Pat brought numerous examples of official White House calligraphy, which included invitations, cards and menus. Her collection was amazing.

Pat's teaching style was casual and informative.

If you ever have a chance to take a class from her, I would highly recommend it.

Pat Vizzini





Lois Suddath



A thousand years from now, Virginia,
nay 10 times 10,000 years from now, he
will continue to make glad the heart
of childhood.

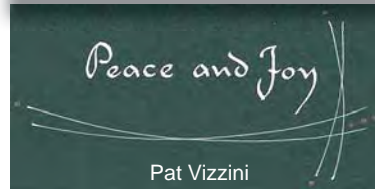
Frank B. Church, 1897
New York Sun

Bill Kemp



Alma Sanderson

Cards, cards
and more cards!



Pat Vizzini



Pam Beason



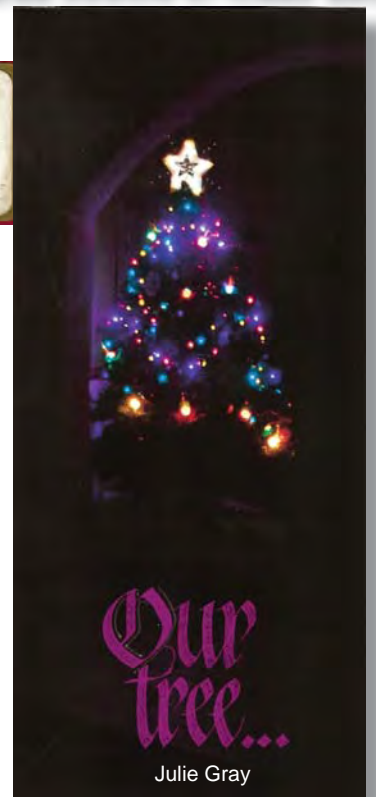
Heidi Markham



Diane Inman



Jan Florence



Julie Gray



Red leaves.
Green leaves.
A beautiful
Christmas
gift of love!

Ellie Murphy



Yvonne Borbon



Ginger Larkin



is
all
around

Merry
Christmas

Sue Poucher

Happy Holidays



Francis Stoppiello

Peace on Earth



Little baby,
sweet & small
born to be
the King
of all.

Theresa Varela

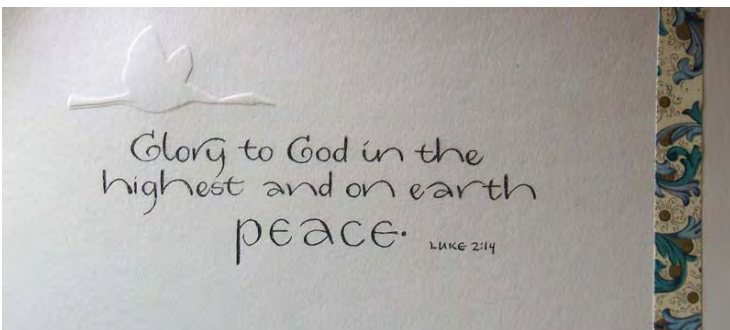


Sherry Bishop



Catherine Hogan

May the year ahead
be filled with the
blessings of peace and good health.



Mary Havenor



Caryl McHarney

Stained Glass Shines!

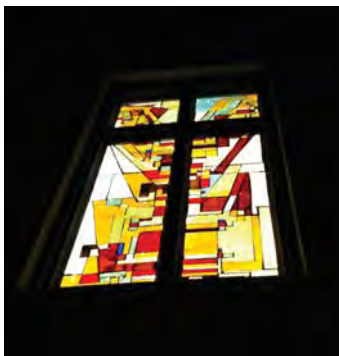
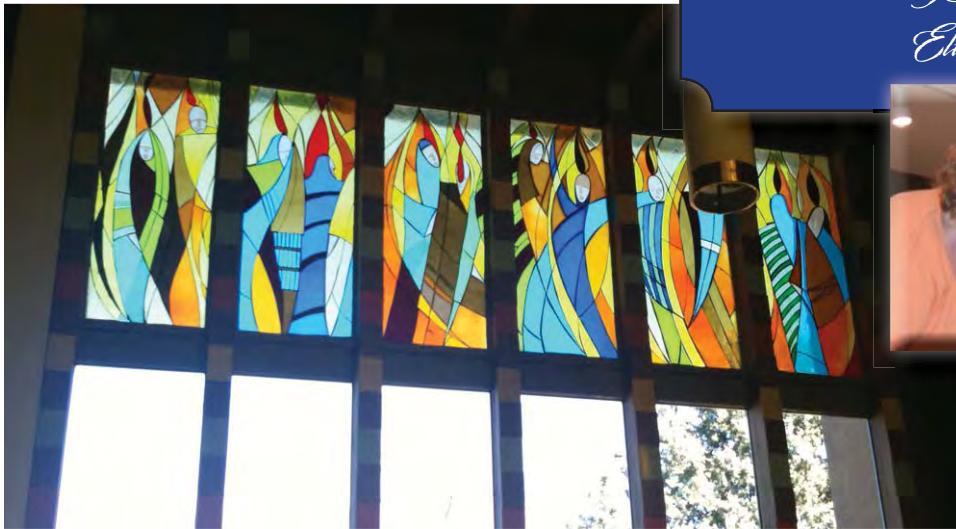
I did the windows for St. Mark's-on-the-Mesa Episcopal church about forty years ago during my 'Glass Period.' I've had a Glass Period, a Metals Period, a Stoneware Period and I am now in my Watercolor and Calligraphy Period, things I can still lift.

The windows are made of fire fused cathedral glass which has been bonded with, at the time, a newly developed epoxy, which expands with heat going through it. This is necessary because of our strong sunshine which heats up colored glass quite rapidly and it contracts just as quickly. After bonding, the glass was grouted with an epoxy grout. I was concerned at the time about using a new technology;



People are like stained-glass windows. They sparkle and shine when the sun is out, but when the darkness sets in, their true beauty is revealed only if there is a light from within.

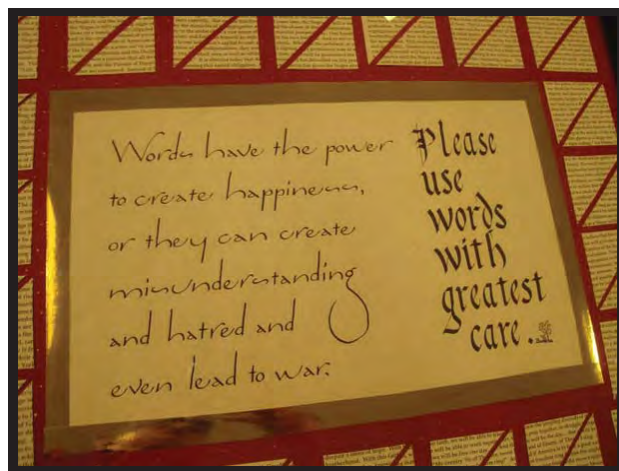
Elisabeth Kubler-Ross



recently the wood frames have had to be replaced, but the glass has held. The cathedral glass was made by hand in Europe and has bubble inclusions that refract the light rays. The windows are based on the Benedictus Es Domini in the bible, a series of blessings, and they go from light warm colors at the altar to dark cool colors at the rear of the church. There are nineteen windows all together and, starting at the front and working back, they bless God, then the people, then the creations of the people, the fields and all that dwell therein, the depths of the oceans and all that dwell therein and last the firmament of heaven and all that dwell therein.

Each window is about 12 feet tall. I did them myself, before my studio was built, so my small children assumed every mother cut glass on the dining room table after supper - but they were installed by professional glass people. Sometimes, when one designs something, a serendipitous thing occurs that fills one with pleasure. This happened with my windows. When they were installed and the sun was low in the winter season, it was discovered that they cast colored light across the blank north wall that moved slowly across it as the morning service progressed. It was like an extra blessing.

Caryl McHarney



“On Christmas Day, 2010...”

I had a profoundly moving experience, thanks to Escribiente. My dear friend and former Escribiente member, Nancy Brandt, came from Wyoming for the holiday, and I took her to St. Mark’s on the Mesa to see our exhibit.

We rounded the room slowly, basking in the beauty and creativity of each piece on display as the voices of the congregation rose in songs of celebration down the hall. I marveled at the diversity of the artwork, feeling humbled and quite amateurish as we reached both of my submissions. I pondered the array of artistic talent, thinking about the reasons why, in the 21st Century, some of us are still captivated by the desire to spread ink the old-fashioned way.

For me, the drive stems from a lifelong passion for words. I took my first calligraphy class with Kathy Chilton five years ago and was hooked. I’m a toddler in the calligraphic arena, and nothing reinforces this perception more than seeing my work hanging beside other Escribiente members’ pieces. I must summon great courage and set ego aside just to participate in an exhibit.

To enhance my insecurity, I chose to display one piece I had entered in the State Fair last year—a quote from Buddha about the power of words, surrounded by a border of triangles cut from Dr. Martin Luther King’s *‘I Have a Dream’* speech. I thought the message was profound, though the piece was far from perfect. The judge’s comment had read, “Wonderful lettering, but the craftsmanship needs improvement for the TOTAL presentation.”

Ironically, I had realized that the triangles weren’t entirely straight, but I was far more concerned that an “h” was too wide in my calligraphy. So the judge and I agreed that it wasn’t perfect, but we had objected to different elements in the composition.

While making this piece, I found myself engaged in a battle with geometry, of all things. What made me choose triangles? There must have been an easier way to convey the message. But I plowed forward with my plan, consoling myself with the thought, “If one person ‘gets it,’ it will all be worthwhile.”

Back at St. Mark’s on the Mesa, the service ended, and the congregation entered the fellowship hall for snacks and conversation. I stood near the door, waiting for Nancy, and watching one woman circle the room slowly. Then she stopped at my piece, with the imperfect triangles and the wide “h.” From across the room I observed her examining it. She read the quote and studied the border—paying particular attention to the last triangle, the attribution to Dr. King. Then instead of moving on to the next item on display, she walked back to the tables, got a young man, and led him back to my piece. They stood there for quite awhile, talking softly.

My eyes welled with tears. I was overcome by the realization that I got to observe at least one person getting the message that seemed so compelling to me.

So thank you, Kathy Chilton, for your gentle instruction and unrelenting encouragement. Thank you, my Escribiente friends, for sharing endless possibilities of artistic expression and providing a forum for me to share thoughts that are so close to my heart. And thanks to the powers of the universe for leading me into the right place at the right time to experience this moment.”

Donna Fastle

ESCRIBIENTE GIVES BACK...



Escrribiente members again enjoyed lettering on the ornaments for the Hospice Division of Presbyterian Hospital to help raise funds. Bill Kemp did a wonderful job of organizing and providing supplies for artists - Pam Beason, Glo Cantwell, Jan Florence, Julie Gray, Catherine Hogan, William Kemp, Ginger Larkin, Lynda Lawrence, Heidi Markham, Ellie Murphy, Ron Peterson, Steve Scott, Francis Stoppiello, Lois Suddath, Betsy Townsend, Pat Vizzini and Peggy Wilhelm.

TO ALL THE TALENTED, HELPFUL, GENEROUS, KIND FELLOW ESCRIBIENTES WHO HAVE INSPIRED ME THROUGH THE YEARS. CARYL MCHARNNEY.

Thank you

Long time member, **Caryl McHarney** was made an honorary member at the February Escrribiente meeting. Well deserved and congratulations, Caryl!

At Letters-California Style, Margie purchased from Mark Van Stone, a copy of an original tracing of the beautiful Romans on the Trajan column. (see Summer 2010 Newsletter, page 10) Unfortunately, not many appreciate the beauty of this except calligraphers... and maybe type design people!



*Welcome
New Members!*

Gloria Montoya
677 Camino Vista Rio
Bernalillo, NM 87004
505-867-6075

Leanna Montano
312 Roehl Rd. NW
Albuquerque, NM 87107
505-842-0753



improv Studio

Come study with

JUDY MELVIN

for a weekend of adventure!

**APRIL 9-10,
2011**

If you are interested in something other than a structured class, have drawers of unfinished work or just want to be nudged to a new level, sign on!

We will use tricks and techniques or learn new ones. The focus is to add to the individual vision of each artist. The IMPROV will be fast-paced, electric and FUN! Come celebrate the joy of creating with an open mind, a willingness to get dirty and share an exciting adventure in design!



To sign up,
contact
Jan Florence,
Workshop
Chairperson,
at: 505-281-
5771

upcoming escribiente meetings...

This is an overview of the upcoming programs at the meetings for the next year. Please note that these programs may be subject to change, but they will give you something to look forward to and see how hard our program directors are working to bring you exciting and informational programs!

<p>APRIL 6, 2011 <u>BEAUTIFUL LETTERS part 2!</u> A continuation of March's meeting with decorated letters. Adding Vining (how to make the vines) and where to place the decorations on the page.</p>	<p>MAY 4, 2011 <u>BEAUTIFUL LETTERS part 3!</u> Finishing up our decorated letters. Adding gold paint, flourishing and other finishing touches and techniques.</p>	<p>JUNE 1, 2011 <u>FRAMING AND MATTING YOUR WORK FOR THE FAIR.</u> Bring any questions you might have for a piece you want to enter or bring the piece and we can talk about it.</p>
<p>JULY 6, 2011 <u>BOARD MEETING</u></p>	<p>AUGUST 3, 2011 <u>METALLICS</u></p>	<p>SEPTEMBER 7, 2011 <u>GUIDELINES OR NOT?</u></p>
<p>OCTOBER 5, 2011 <u>CALLIGRAPHIC GIFTS</u></p>	<p>NOVEMBER 2, 2011 <u>MAKING VALENTINES!</u></p>	<p>DECEMBER 2011 <u>CHRISTMAS PARTY!</u></p>
<p>JANUARY 4, 2012 <u>NO GENERAL MEETING</u></p>	<p>FEBRUARY 1, 2012 <u>HERE'S WHAT I AM WORKING ON...NOW I NEED SOME HELP!</u></p>	<p>NOTE: <i>Remember to watch for your monthly e-mail flyer from the ever creative Lynda Lawrence, to bring you up-to-date on each month's meeting topic, and other timely information.</i></p>

BE SURE TO SEE YOUR NEWSLETTER AND OTHER INTERESTING ITEMS RELATING TO CALLIGRAPHY ON
ESCRIBIENTE'S WEBSITE: <http://www.escribiente.org>

If you would like to have your monthly flyer, produced by Lynda Lawrence, mailed to you, please contact her at: **505-715-9464**, otherwise she will e-mail it to all members.

If you would like to receive up-to-the-minute information and news relating to Escribiente and it's members, send your e-mail address to Bill Kemp at: **505-235-4983** and he will add you on.

The deadline for submissions for upcoming issues of Escribiente...

SUMMER ISSUE: (mailed in June) deadline is MAY 1ST

FALL ISSUE: (mailed in September) deadline is AUGUST 1ST

WINTER ISSUE: (mailed in December) deadline is NOVEMBER 1ST

SPRING ISSUE: (mailed in March) deadline is FEBRUARY 1ST

Any information and/or artwork you have is welcome! Classes you've attended, artwork you have done, tidbits of news, awards you've won, book reviews, a favorite material you can't wait to tell everyone about, upcoming shows, classes you are teaching, etc. etc. This is YOUR connection with the calligraphic world in New Mexico and beyond...we always welcome your input! Mail information to me at:
Julie Gray, 96 Paa-ko Drive, Sandia Park, NM 87047.

I WILL return your stuff!

We have the most amazing printer for our newsletter!

SPEEDZONE
Print and Copy

6000 Lomas NE

Support them with all your copying and printing needs. They are good...and fast! Plus they can even make rubber stamps for you!

Contact: Frank Horner or
Nanette Ely-Davies at:

505-262-2679