

# *Escribiente*

**SPRING 2023-1  
NEWSLETTER**



*Escribiente is Albuquerque's Calligraphic Society  
open to anyone interested in the fine art of beautiful lettering*

## OUR PREZ SAYS Dear Calligraphiles,



Sitting in a wheelchair and looking back on the last three months, I am very grateful for all who have stepped up to help with my Escribiente tasks — Kathy Chilton for writing agendas and hosting meetings, Michal Sommers for taking over the Programs Chair position, Kasia Stevens and Michal Sommers for emptying the mail box regularly, Evelyn Costello for taking over the third Saturday meeting activities, and Ron Peterson for suggesting the Heights Cumberland Presbyterian Church as a future meeting location.

I am also grateful for all who continue doing their jobs to keep Escribiente running so well: Diane Inman and Lisa Rodriguez for the delightful holiday party, Trish Meyer for organizing the fabulous exhibition at the Placitas library, and the bookmarks at the Special Collections Library and those who came in to write bookmarks with her—Catherine Hogan, Bill Kemp, Diane Inman, Janice Gabel and Lynda Lawrence. Thank you Janice Gabel who is organizing the workshop



PO Box 8884  
Albuquerque, NM 87198

## BOARD OF DIRECTORS 2022 - 2023

PRESIDENT: Elizabeth McKee - [alabeth55atgmail.com](mailto:alabeth55atgmail.com)

VICE PRESIDENT: Kathy Chilton - [katherinechiltonatme.com](mailto:katherinechiltonatme.com)

TREASURER: Polly Owens - [powens157atgmail.com](mailto:powens157atgmail.com)

SECRETARY: Evelyn Costello - [evelyncostelloatmsn.com](mailto:evelyncostelloatmsn.com)

## COMMITTEE CHAIRS

E-NEWS: Bill Kemp - [brotherbill55athotmail.com](mailto:brotherbill55athotmail.com)

FUNDRAISING: as needed (per event)

HOSPITALITY: Alma Sanderson - [almasanderson.com](mailto:almasanderson.com)

LIBRARY: Trish Meyer - [trishatescribiente.org](http://trishatescribiente.org)

MEMBERSHIP: Beth House and Ginger Larkin  
[beth.house107atgmail.com](mailto:beth.house107atgmail.com) and [ging1330ataol.com](mailto:ging1330ataol.com)

NEWSLETTER: Lynda Lawrence - [lynda33athotmail.com](mailto:lynda33athotmail.com)

PROGRAMS: Michal Sommers - [sommersataa.edu](mailto:sommersataa.edu)

PUBLICITY: OPEN

EXHIBITIONS: Trish Meyer - [trishatescribiente.org](http://trishatescribiente.org)

STATE FAIR: Sharon Shannon and Elizabeth McKee  
[sshannon2atswcp.com](http://sshannon2atswcp.com) and [alabeth55atgmail.com](mailto:alabeth55atgmail.com)

WORKSHOPS: Janice Gabel - [janice.gabelatgmail.com](mailto:janice.gabelatgmail.com)

on April 22—23 with Julie Wildman (there is still time to sign up!), Polly Owens who continues to try to get a refund from Manzano Mesa, Sharon Shannon, our tech host who is also collecting our weathergrams, and Esther Feske who is organizing the chapbook creation again this year. To Bill Kemp who passes on our email announcements, Brallon Alonzo and Trish Meyer who keep our social media on track, and Lynda Lawrence who continues to produce these excellent Newsletters.

Spring has arrived and I am looking forward to walking again soon. We will have our Saturday, April 15<sup>th</sup> meeting from 1-3PM at the Heights Cumberland Presbyterian Church, 8600 Academy Road NE Albuquerque, NM 87111. We will use this meeting to help anyone who needs advice with their June *Quote Swap*. If you already have yours finished, come to share ideas with anyone who is stuck. If you have forgotten what the Quote Swap is all about, you can find the information on Page 14 of this newsletter. Remember, this is a calligraphy swap so don't be paralyzed by your hesitation to draw trees! But for those who want to draw trees, as the old saying goes—*When the student is ready someone will post a lesson on YouTube*. I got lost there yesterday and here are a couple of my favorites:

[Five Minute Easy Watercolor Tree Painting tutorial](#)

[Easiest Way to Paint TEN Trees with Watercolor!](#)

Once you start looking, you will be swamped with more and more suggestions. But remember, the quote is – **For all the gifts they give us, thank a tree** by Caryl McHarney.

So you may want to draw or list some of the tree's gifts or even make an alphabetical list of trees – *Ash, Baobab, Cedar...* and not actually draw a tree at all. This is a time to be creative AND use your calligraphic skills.

May 20<sup>th</sup> is the day of the Poets' Picnic, so that will be our May in-person meeting location. Looking forward to seeing many of you soon,

Elizabeth

◆ **COVER ART** by Brallon Alonzo to commemorate Escribiente's 45<sup>th</sup> anniversary. It's beautiful!

◆ Thank you **Debbie Gallas** for the engraving workshop review. Debbie is one of our scholarship students who is a long-distance member joining us from Indiana.





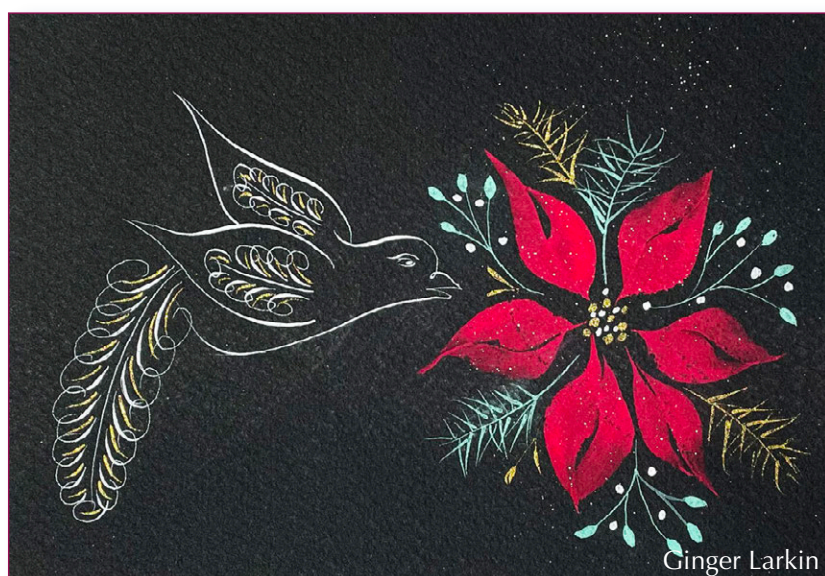
Our 2022 holiday card exchange connected us in fun fashion. Just look at all the beautiful cards we made. Now I have nineteen more gems to add to my “inspiration file.”

Thank you to Debbie Gallas for suggesting we include a colophon. I loved reading about the materials and techniques used for the artwork.

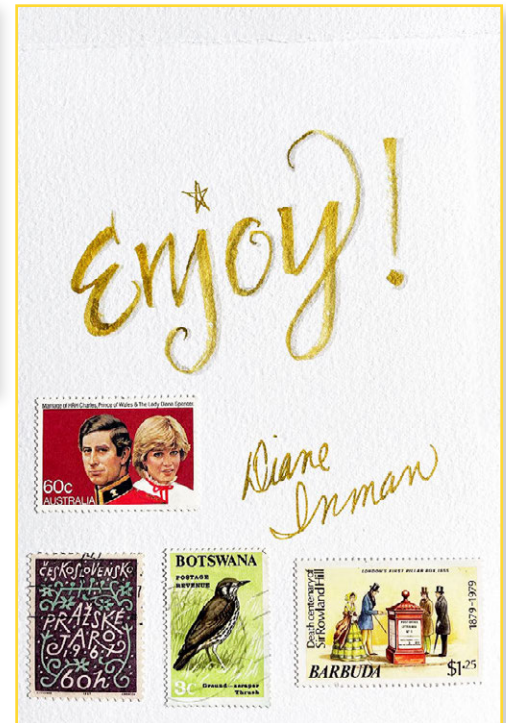
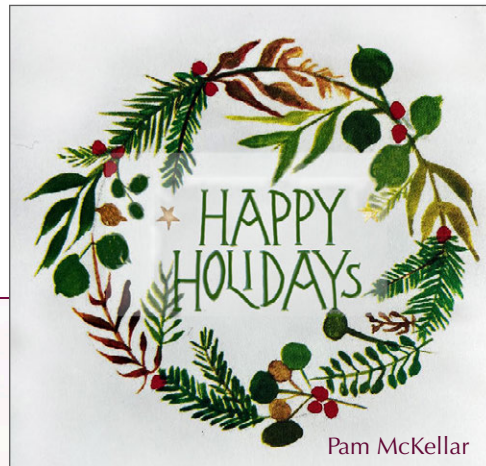
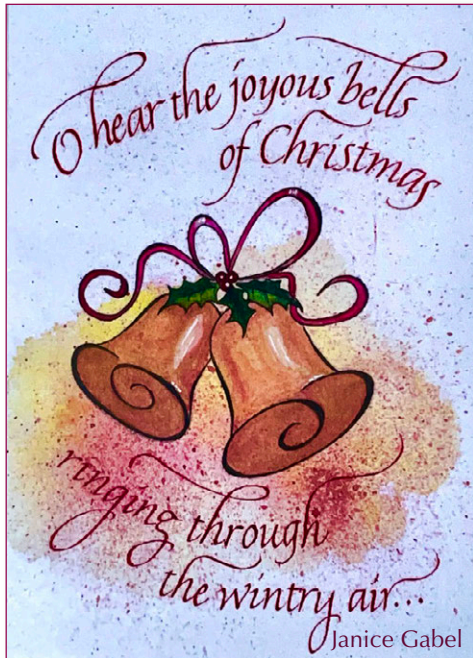
Looking forward, there were suggestions from three participants to change the way we manage the card exchange. The idea is to send fewer cards without limiting the number of participants. Some suggestions are to divide the participants into two or more groups, sending cards to only those in your group - maybe ten people or so. This year we had 20 participants, so that would be two groups. There’s plenty of time to consider this and we can discuss it at a meeting later in the year.

Thanks to all the participants, and Happy New Year to everyone!

Diane Inman



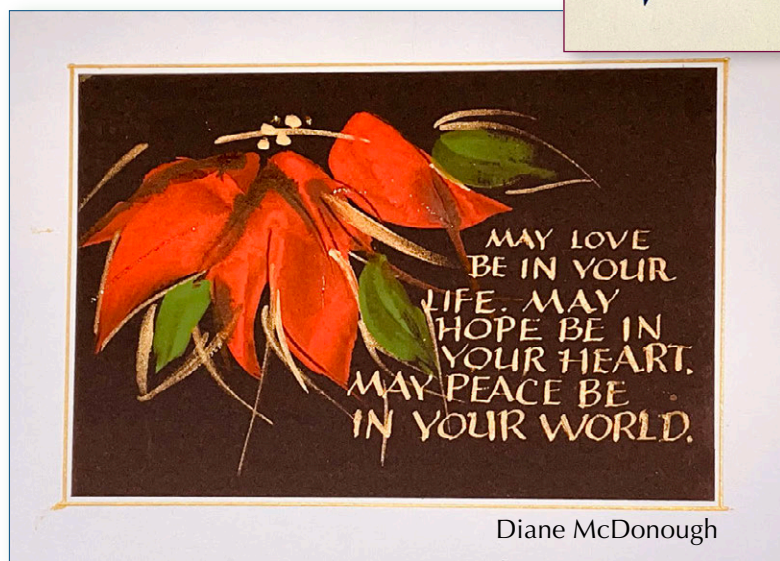
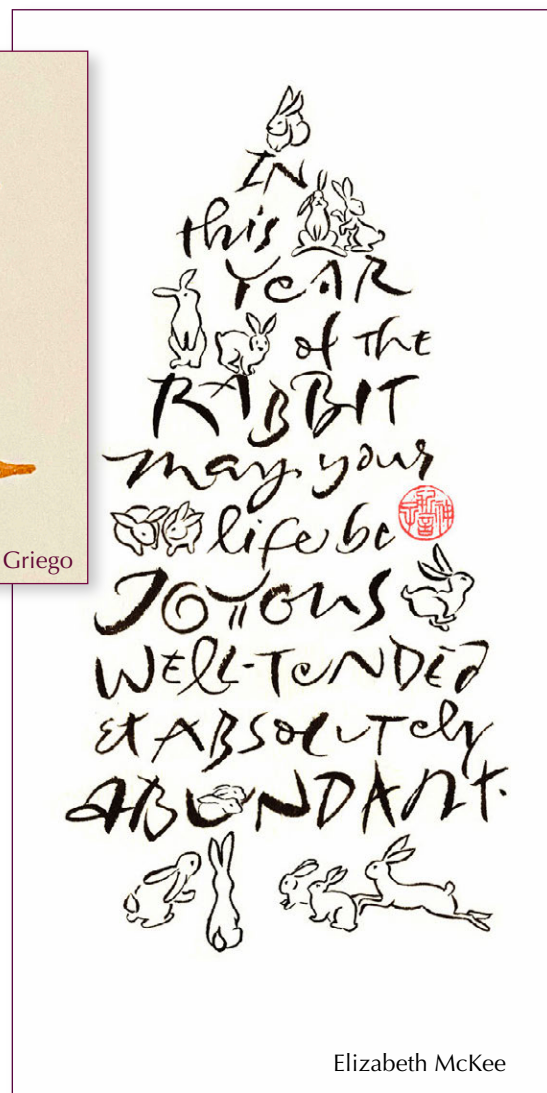
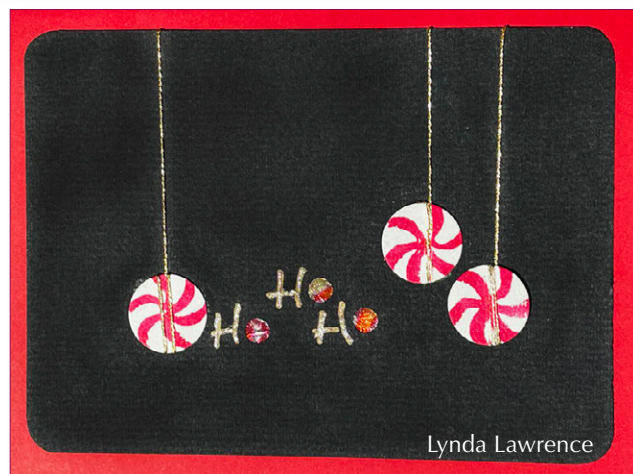




Thank you, Diane,  
for the card and party photos!







Caryl notes that in Nepal the Buddhist refugees from Tibet fly Prayer Flags. They believe each time the wind moves them, the printed prayers are sent to all the people on earth for Peace, Compassion, Strength and Wisdom.

The colors in order represent  
Blue - sky, White - air, Red - fire, Green - water, Yellow - earth  
Caryl McHarney







Holliday Party  
Photobooth  
hijinks



Thanks Diane  
You sure  
know how  
to throw a  
fun party!







Each year Kathy Chilton recruits a team of volunteers with magic pens to letter and assemble Valentines to be placed on the trays for clients of *Meals on Wheels*. It's our chance to use our pink ink and red heart stickers.

This note Kathy received from *Adelante*:

"Our executive director just contacted me and said that she had your valentines cards in the van during out-reach today to show another volunteer since they were so amazing. One of the women who they were serving saw the cards. She asked for one, saying how beautiful they were. So, of course, they gave her one, and she hugged it tightly to her chest. She said it made her very happy! The woman who asked for the card struggles with mental illness, and sometimes has psychosis, so it lifted them all to see her so happy. Thank you so much for that moment." ❤️

This from Kathy in February — "You stellar scribes! You have made the day brighter for hundreds of people. Many, or most, would not have received a valentine without you. Here is a numerical account of your talent and kindness:

More than 300 are on the trays of the recipients of *Meals on Wheels*. That was the number of their final request, fewer than in other years. Then about 100 went to *Adelante*, a nonprofit serving those residents with disabilities. One hundred more went to a humble nursing home in the South Valley. Some went to *Health Care For The Homeless*. Your valentines inspired a class of six-year olds at Mountain Mahogany Public School to make some too. They made pop up cards to proudly add to the give-away.



## Engraving Workshop Review – Debbie Gallas

I was lucky enough to be awarded a \$scholarship from Escribiente to take Kestrel Montes' online class ***Calligraphy Engraving – Basics and Beyond***. Thank you Escribiente for the opportunity to further my skills, and for this chance to share a little about the class with the guild.

Previous to taking this class, I had purchased a small Dremel tool from a local hardware store and some diamond bits to experiment with glass engraving. Even though I despise the sound of the drill at the dentist's office, somehow when I'm in charge, it doesn't bother me at all! I watched many videos on YouTube on how to engrave, but felt I wanted a more complete look into using the tool for lettering. Kestrel's class certainly filled my need.

The class is divided up into many chapters making it easy to take in bites. It begins with safety (where it should!). From there some of the topics include tools and supplies, understanding burr rotation, and engraving demonstrations on a myriad of substrates including glass, metal, wood, etc. Also included is information on how to lay out a long quote, correct errors, and engrave logos or graphics. My favorite part of the class was learning about color filling the engravings.

Kestrel tackles a project with each demonstration from start to finish. She invites the student to play along with her. I have not yet engraved on every surface taught, but have done many. I spend a lot of time practicing on thrift store items or things from my recycle bin. Each one is a learning experience.

The class is recorded, and once you have registered you have access to the videos for six months. You also have access to a private group of others who have taken the course. The group access is forever. It is not a very active group, but it is fun to see what others are making. Kestrel is quick to answer any questions that students pose on this group. This is a real bonus to the class!



Some of the projects I have made since taking Kestrel's class include a candle for a friend who moved into a new home, a wine bottle as a wedding gift, and a personalized cologne bottle. Maybe my favorite gift was for a dear aunt who recently lost her husband (my Godfather). She was his caregiver for his last years as he struggled with Parkinson's disease and dementia. I found their wedding photo, put it in a beautiful frame, and engraved some of the verse from First Corinthians - *Love is patient, love is kind...* on the glass. She was very touched by the gift.

I have only been doing calligraphy since right before the pandemic. I have taken a variety of online courses, and even a few live ones recently. This was my first engraving class. There are not many course opportunities available that show the exact process of engraving on multiple surfaces including glass, metal, stone.

I get such joy from engraving and making gifts for friends and family! I've only been doing calligraphy for a few years and am so glad that I have found this creative outlet. If you want to expand your repertoire to include engraving, I highly recommend Kestrel Montes' course through <https://www.learncalligraphy.com>. It is a treasure trove of information and lettering possibilities!

Any member interested in receiving a scholarship for an upcoming workshop should email [Evelyn Costello](mailto:Evelyn.Costello@escribiente.com). Escribiente-sponsored workshops will be reimbursed at \$100. Non-Escribiente workshops will be reimbursed at 50% of the workshops fee (up to \$100). A review of the workshop for our newsletter is required.



**The Love of Calligraphy**

Exhibition by members of Escribiente,  
Albuquerque's Calligraphy Society  
February 4 - March 16, 2023  
Reception: Friday, February 17, 5 - 6:30pm

**Calligraphy Demonstrations**  
Saturday, February 25, 2-4pm  
Take home a personalized bookmark  
created by Escribiente calligraphers and  
learn about different calligraphic styles!

Placitas Community Library  
Gracie Lee Community Room  
455 HWY 165 | Placitas | NM 87045

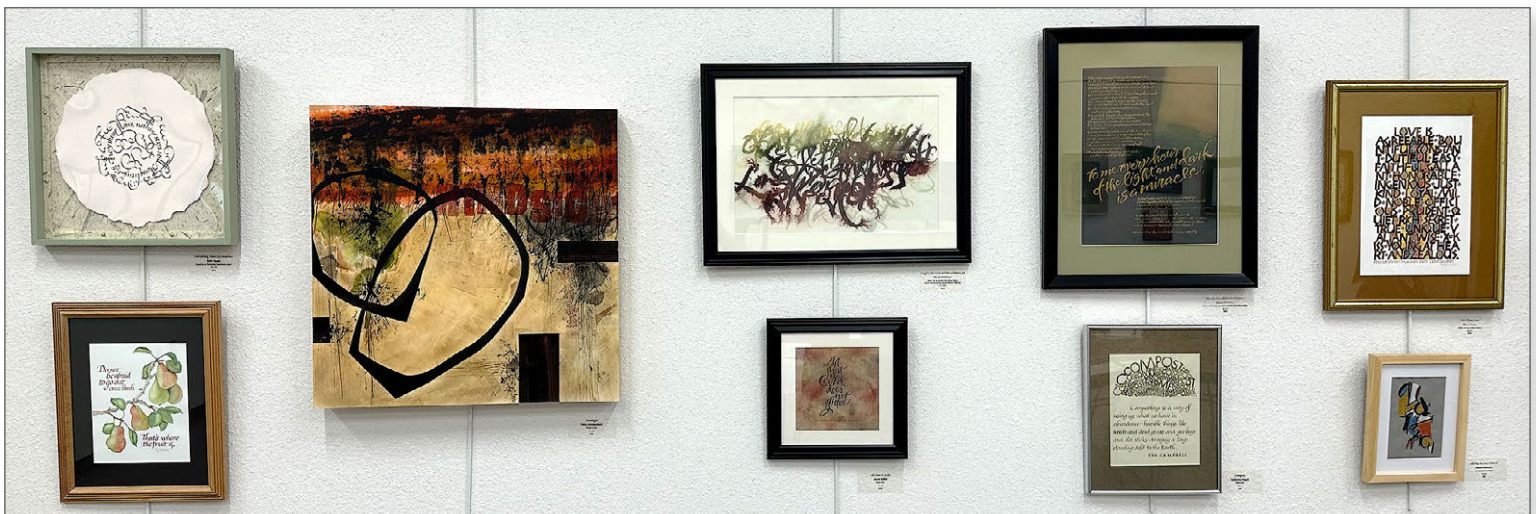
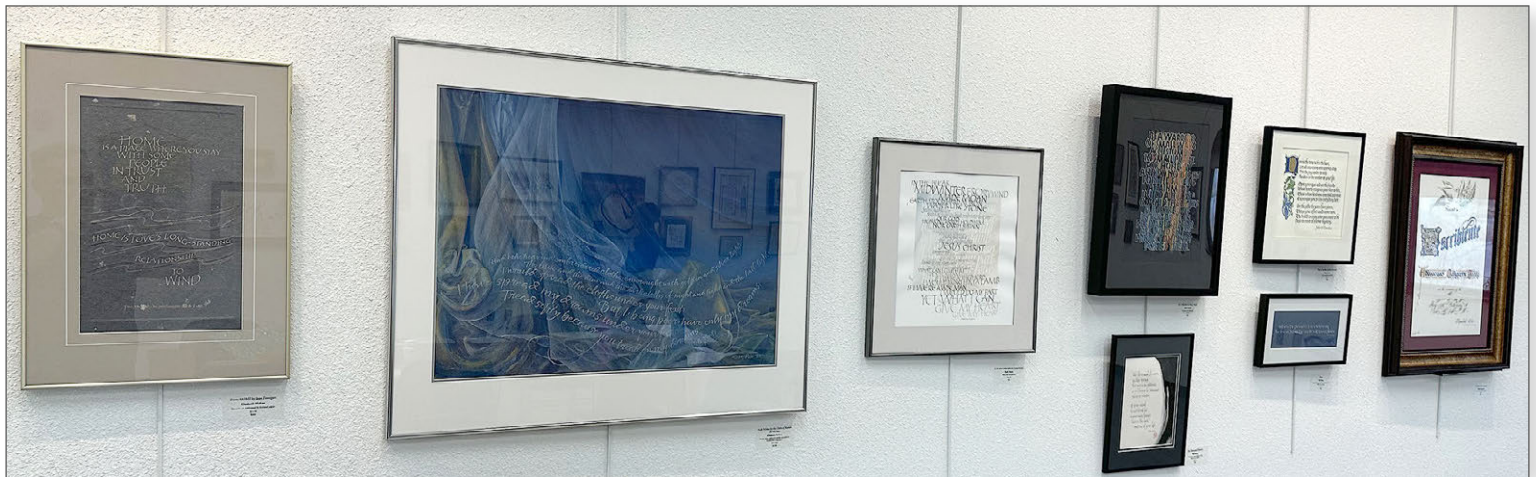
**Escribiente**  
Exhibite is open to anyone interested  
in the fine art of beautiful lettering.  
Learn more at [escribiente.org](http://escribiente.org)

Escribiente's *Love of Calligraphy* exhibit graced the walls of the Placitas Community Library from Saturday, February 4th to Friday, March 16th. Reception was Friday, February 17th.

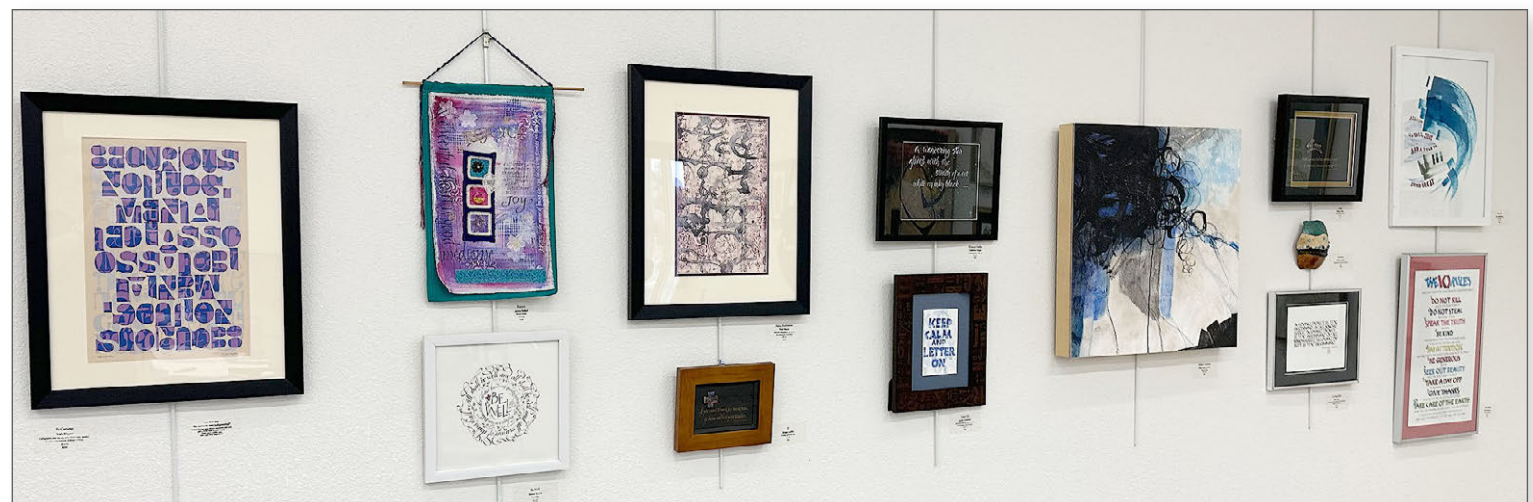
Locals were invited to drop by the library on a Saturday in February and were invited to take home a personalized bookmark created by Escribiente calligraphers. As visitors watched the demonstrations, they learned how various tools—from metal nibs to pointed pen and brush—are used to create a wide variety of calligraphic styles.

Most frequently asked questions: "How long did it take you to learn this?" and "So beautiful! Where are lessons being offered so I can learn how to do this?"

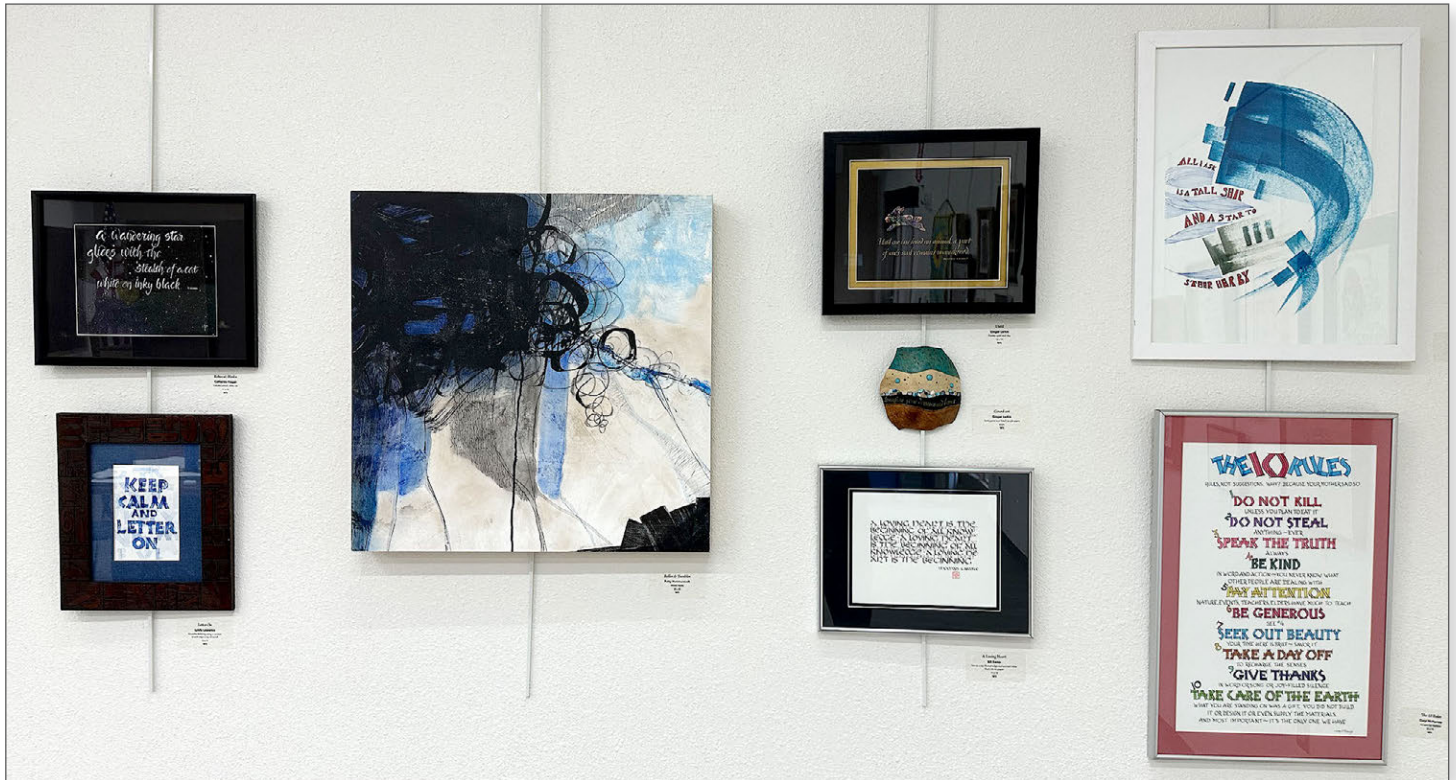
Thank you Trish for commandeering this occasion for us to celebrate and show the world what we do for fun. And thank you Evelyn, Sharon and Trish for the collection of exhibit photos!



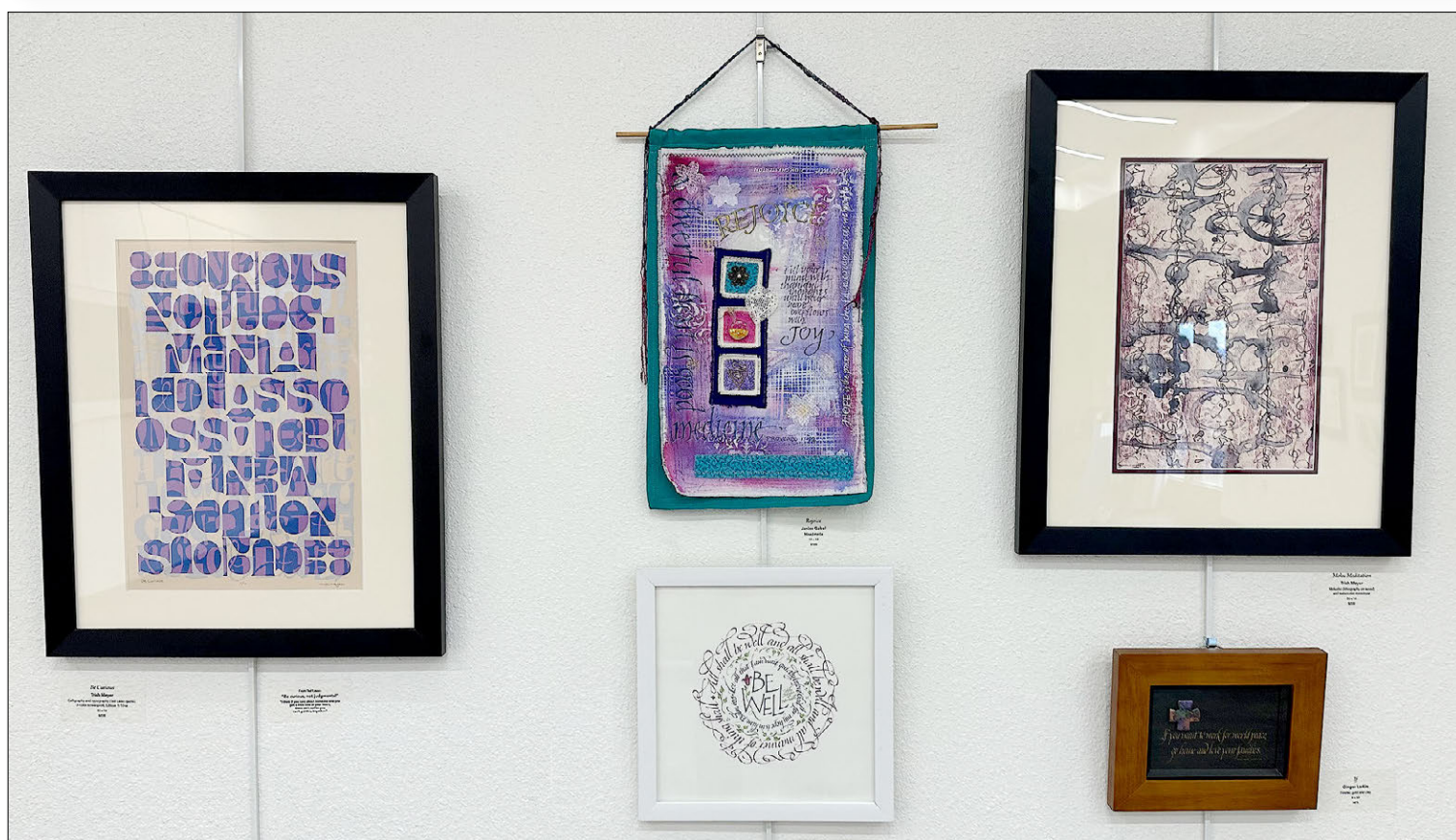
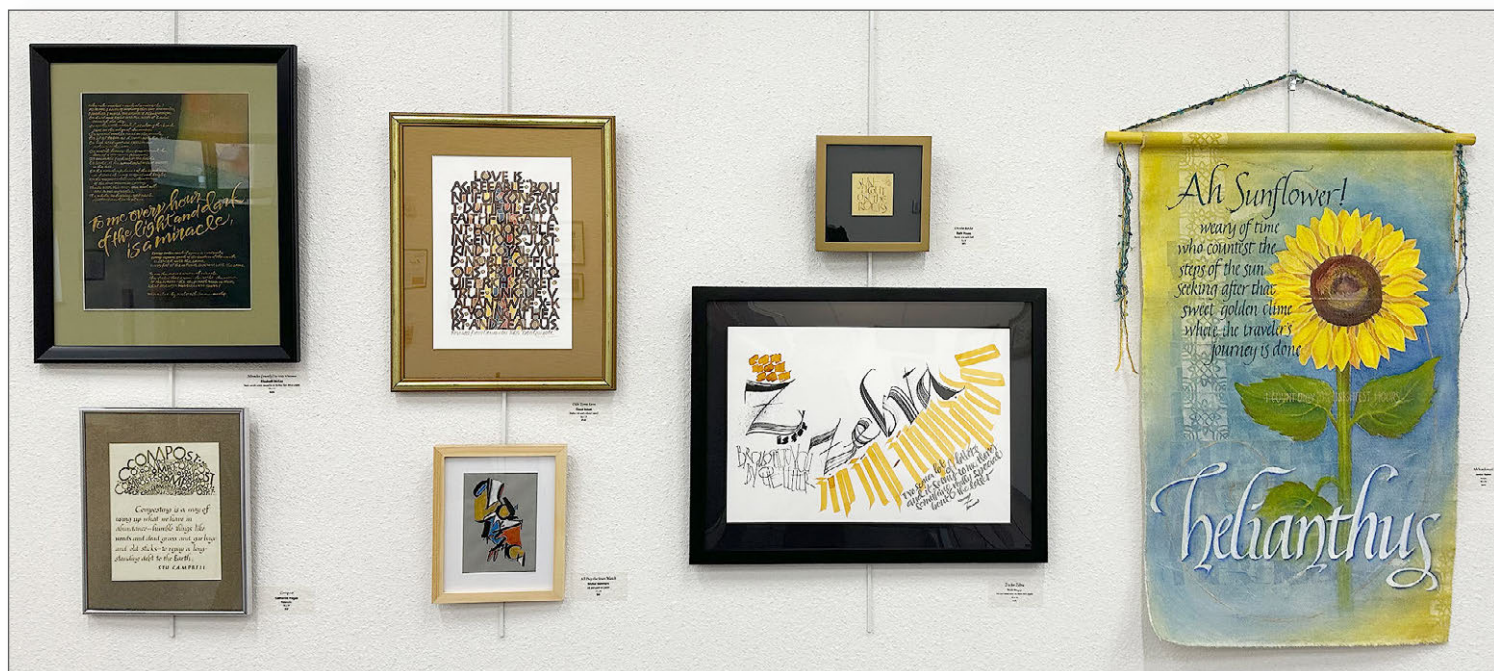












Reception  
Centerpiece

Escribiente is proud to have presented this exhibit to the public. How fortunate we are to be part of an organization that promotes creativity and education in all aspects of the lettering arts. The exhibit highlights some of the wonderfully creative and innovative art that continues to emerge from our members. Oh, BTW— did we mention we've been doing this stuff for forty five years?



### Bookmarks Event: Saturday, February 25<sup>th</sup>

Four calligraphers (Bill Kemp, Lynda Lawrence, Diane Inman and Trish Meyer) volunteered to letter names on bookmarks for the library exhibit visitors. We had supporting artwork and tools to demonstrate Foundational, Blackletter, Pointed Pen and pointed brush styles. Evelyn Costello greeted visitors and explained the art on display and answered questions. The exhibit and bookmarks represent a beautiful sampling of a variety of styles and tools.



Speaking of bookmarks, Escribiente members were on hand on March 25<sup>th</sup> to commemorate and celebrate the 98<sup>th</sup> anniversary of *Albuquerque Special Collections Library*. Janice Gabel, Catherine Hogan, and Trish Meyer lettered names on bookmarks for library visitors.



## QUOTE SWAP UPDATE:

Everyone has until the June 7, 2023 Escribiente meeting to write out your own calligraphic version of this quote:

***For all the gifts they give us thank a tree***

by Caryl McHarney

Write in any lettering style that you like – on paper or bark or stone or in a book or a shopping bag or on a gourd, or on whatever you like to write.

Participation is not compulsory. Members of all skill levels are encouraged to participate. Our members in all of the far-flung locations are also encouraged to participate. For this reason everyone might consider creating something that is easy to mail.

Then before the June 7<sup>th</sup> meeting, all the members who choose to participate will load images of their work onto the Escribiente Padlet.

Each piece will be given a number and each participant starting with number one will be given the opportunity to talk a little about his or her work. Hopefully we will have lots of participants.

Our tech host will put the names of all the participants on her spinning wheel of fortune, and after each description a winner of that piece will be chosen and that name will be removed from the list.

All the participants will end the evening as proud owners of a piece of artwork made by one of our lettering friends.

For those of you who live in Albuquerque, the physical transfer of our wonderful work can take place in person on June 17<sup>th</sup> of at the Heights Cumberland Presbyterian Church between 1:00 and 3:00 PM.

## Why participate?

1. We have been too isolated for too long by Covid, and this is a way to share an experience with the members of this lettering community.
2. In every group there are a few members who are always front and center. This is our chance for everyone to shine.
3. If you lack confidence in your skills, you will be given ideas and advice at the in-person meeting at Heights Cumberland Presbyterian Church on April 15<sup>th</sup>. This is a great opportunity for us to share our passion among friends.
4. We have some brilliant calligraphers in our guild and you might win something really amazing.
5. Why not? Really, why not?

Elizabeth McKee

**Chaos often breeds life, when order breeds habit.** — Henry Brooks Adams

Now this quote seems like a good intro for a class In **Wonky Books/Curious Letters** with Elizabeth McKee. The making of a book is essentially puzzle solving. The book artist needs to gather all of the parts – text, images, letters, inclusions and bind them into a whole that becomes a moveable work of art in the reader's hands. It is insufficient to make each page or double page spread work as a unit. The pages of a book should flow like a river. Unexpected turns, branches, boulders and waterfalls add interest for the reader but each page must flow from the previous to the following page. To retain the reader's interest the pages must function as a unit even if they are never viewed together.

Sounds like fun? All this and more at Ghost Ranch June 4 –10. [Wonky Books class link](#)

Calligraphers and book artists work so hard to achieve perfection This is a class about making found parts into a whole – with a few hurdles to help break people of their “excellent” habits – and begin to embrace new lettering and book possibilities. Check Elizabeth's [website](#) classes page for details.

Speaking of Ghost Ranch, see Creative and Practical Approaches to **Casual Sign Writing, Layout and Design** with [Heather Martinez](#), June 4<sup>th</sup>– 10<sup>th</sup>.

Have you ever been struck by a sign: at the grocery store, driving down the highway, or while walking down the street? Learn the colorful art of lettering with markers on chalkboards and translate what you learn onto other substrates for creative and practical purposes. From small handmade signs, sidewalk chalkboards, to wall pieces, backdrops and more.

By the end of the week, you will have amassed a portfolio of works and have access to several project ideas and resources.

Visit Escribiente's public [YouTube Channel](#). We currently have at least six videos from past programs, and the video of the September, October and November programs will be posted soon.

**Bill Kemp** has developed a new signature pointed pen script. His class will appear on the Gentle Penman website: <https://www.thegentlepenman.com>. Class will be in June via Zoom.



# We should teach cursive to all our students

*It utilizes hand-eye coordination boosting brain development*

BY ANDREA KIESLING  
TEACHER, CLAYTON

In our home, we have a framed letter written by a Civil War soldier to his mother. That letter has been passed down for generations in my mother-in-law's family. In it, the soldier talks about the hardships of war and describes the fields around him near Riley Knob in North Carolina, telling his mother that "there is lots of pine and cedar and some of the clearest streams of water [sic] I ever saw."



Andrea  
Kiesling

The soldier goes on to say that he's tired of marching and wishes the war would close. It's a mundane letter — no juicy gossip about a spy in the ranks or harrowing journeys to save his platoon — but an incredible piece of the nation's history that

is important to my family.

The downside is that the entire letter is written in cursive. That's not a problem for me or my husband because we both learned cursive in elementary school. On the other hand, our daughter can't read or write in cursive. While she is an A student, I can't help but think that she's missing out.

In 2020, the New Mexico Public Education Department determined the Science of Reading to be the primary literacy instructional approach. Part of using this research-backed instruction is learning how to form letters, to write. The letters p, q, b, and d all look the same in print (don't believe me? Write them down right now on scrap paper) but different in cursive. In New Mexico, however, cursive is no longer a part of the standard curriculum. And yet, the benefits of cursive for all students are undeniable.

I teach students with dyslexia and dysgraphia (more often known as specific learning disabilities in reading and writing.) The neurodivergent brain doesn't always acknowledge the difference in letter formation: a student with dyslexia or

dysgraphia might compensate by using capital letters P, Q, B, and D. Cursive, on the other hand, allows a constant flow to the letters. Those same troublesome letters in print look more distinct in cursive (write those same letters in cursive and compare the shape and the formation between your print and cursive letters. See?).

The good news is that many students in New Mexico who have dyslexia receive instruction in cursive. They learn cursive in small groups alongside a reading coach or an interventionist and thrive in handwriting and reading comprehension. Sierra, one of my former students, received intervention for her dyslexia but has been able to move from disjointed print letters to passing every spelling quiz she takes when writing in cursive. Sierra reads better than ever and spends less time worrying about what letter to use and more time working on her reading comprehension — one of her academic goals. The International Dyslexia Association agrees that cursive handwriting can improve these students' learning experiences. We should make cursive instruction avail-

able to all students with dyslexia in New Mexico.

Yet, there are many students, just like my daughter, who don't need intervention services; her handwriting is legible, but certainly not eloquent enough to write a letter. With the push for systematic, explicit phonics instruction that leads to better spelling, writing, and overall reading comprehension, I have to wonder: Why aren't we also teaching cursive handwriting to all our students? My daughter and students like her would benefit from cursive instruction by learning a script that improves their writing and allows all students to have an equitable writing experience.

According to a Université de Montréal study, cursive handwriting in the general education setting might improve word production, syntax, and memory since the letters are linked. Hence, the brain remembers the word as one unit instead of individual letters. Even publishing company Scholastic boasts of the improvement of reading and writing when using cursive. A Johns Hopkins study published in Science Magazine found that the brain changes when cursive

is introduced. Almost immediately, fluency improves and neural pathways light up. Yet, cursive for many of our students has been relegated to a bygone era, a nostalgic reminder of the past for their parents.

Utilizing fine motor skills, hand-eye coordination, and boosting memory and brain development, cursive just might be the magic key to help all students form letters, words, and sentences. If we can both help a child with dyslexia and dysgraphia, and otherwise improve motivation and engagement by teaching students cursive because (as some of my former students say) "it's cool," we should do it.

We didn't leave our daughter in the dark about the Civil War letter. I read the majority of it and then my husband translated the rest into print. Our daughter's response left us silent: "That's cool. How long ago was that? Why is it in a frame? When do I get to learn cursive in school?"

Andrea Kiesling is a special education teacher at Alvis Elementary School in Clayton, New Mexico. She is a 2022-2023 Teach Plus New Mexico Policy Fellow.

Escribiente, along with the New Mexico State Poetry Society and LIBROS book arts group, are community sponsors of the annual **Poets' Picnic** on May 20<sup>th</sup> at the Open Space Visitor Center, 6500 Coors Blvd NW. The day includes calligraphy demonstrations, a haiku workshop and nature walk in the morning, and an afternoon of music and poetry. Visitors are encouraged to bring their own picnic lunch while enjoying music and poetry outdoors. Free admission, open to all.

Escribiente calligraphers write haiku chosen from submissions by New Mexico poets on brown paper bag tags called Weathergrams for display on trees and bushes on the Open Space grounds. Submissions from 2023 include 14 pages of haikus (about 8 per page), for a total of 109 submissions. Sharon [sshannon2@swcp.com](mailto:sshannon2@swcp.com) will email a page (or more) to you if you wish to participate in lettering weathergrams.

Please plan to submit your Weathergrams to Sharon by May 1<sup>st</sup> to allow time to proof them and prepare them for hanging. You may either mail them to Sharon Shannon, 3 Alby Lane, Los Lunas 87031, or bring them to the April in-person meeting at the Heights Cumberland Church.

Esther Feske will be coordinating the chapbook containing all haiku submissions, some with "haiga" illustrated haiku to include in the chapbook. If you are interested, please contact Esther at [eofeske@yahoo.com](mailto:eofeske@yahoo.com).

## Other ways to participate in the Poet's Picnic:

**1. Hanging:** help with installing the finished Weathergrams in the trees on the morning of Tuesday, May 16, 9am–11am (weather may dictate a change).

**2. Demonstrations:** Create Weathergrams for the public at the event (Saturday, May 20) in the portal area outside the main entrance. We will have two sessions (pick one, or stay for both). Email Sharon to sign up.

first session: **12 noon – 1:30pm**  
second session: **1:30pm – 3:00pm**

We encourage all members to contribute, including those from out of town. If you're a beginner, Weathergrams are a great way to practice! No one will be judging you! They will be hanging in the trees, blowing and twisting in the wind. The authors of the haiku love to see their poems hanging in the trees!



This from the musty, dusty archives of member contributions. A crew of caring and sharing Escribiente members teamed up to pull together this collection of hints for daring artists who wish to explore some possibilities. Check the small print where you'll recognize names of members who have been members since the early 21<sup>st</sup> century (and beyond)!

## How to Write on Almost Anything....

April 2008 Escribiente Program

Hints, tips and tricks courtesy of Kathy Chilton, Esther Feske, Julie Gray & Jan Florence

**Add another technique to your artists bag !**  
**We hope this helps you in exploring new things.**

### *Some Product Tips:*

**Pounce** - An old fashion drafting tool. This is a white powder & comes in a can. Sprinkled and spread out on smooth paper give it a little "tooth", making it easier to write on. Helps prevent your ink from bleeding. It evens the surface out and adds 'grit' to the paper. Safe for any colored paper.

**Golden Archival Aerosol Varnish** - When used over Dr. Martin's and Luma ink - makes them fade proof.

**Golden Acrylic Ground for Pastels** - When used over painted and collaged surfaces you can write over the designs. It adds a transparent tooth.

**Alkyd Paint** - This is synthetic oil paint and sticks to almost anything.

**Plaka Paint** - Dries to a matte finish and is waterproof in 24 hours. Can write on it. Use on paper, cardboard, wood plaster, glass or metal.

**Elmer's Art Paste** (Formerly known as Ross Art Paste) - A powder that mixes with water and when applied over art & dried, it can be written.

**Golden's Gac 200** - Mix with Golden acrylics color to write on metal & foil. Golden colors are recommended because they have lots of pigment in them, producing vibrant and true colors. For Golden Gac info go to Golden and enter a search for Gac 200.

**Paint for plastic** - There is a paint made for plastic but it has varnish and will clog your pen. It can be found in art stores.

**Black Magic ink** - totally opaque black, no gray, flat black.

**Gesso** - Acts as a glue, protects surface are two of the uses. Investigate for more uses.

**911 - Wetting solution for gouache.** 9 oz. distilled water, 1 oz. Gum Arabic, 1 oz. Alcohol, add 1 - 2 drops of glycerin (optional). Put some in dropper bottle & use as you would water (i.e. to mix with).

### *Surface Hints:*

**Wood** - Spray lightly with workable fixative, write with Gouache, or Sumi ink or acrylic (any kind).

**Tile** - Clean surface, use acrylic paint, outdoor lettering paint, or alkyd paint.

**Ceramics** - To repaint fired/glazed ceramics. Paint pens/brushes are fast and easy.

**Rock or Stone** - a. Clean surface thoroughly and let dry. Paint with acrylics. Smooth surface a pen is okay, rough surface use brush.

b. Draw pattern on and have them sand blasted (call monument companies for sand blasting info).

Note you must use pieces large enough so check with monument co. first.

When using letters - be sure and reverse them so they won't be backwards.

**Concrete** - Alkyds or acrylics.

**Canvas** (for rugs or banners) - use latex house paint and seal with water base polyurethane.

**Metal** - T ink (if you can find it!) doesn't crawl. Gac 200 added to your medium.

**Glass** - Gac 200 added to your medium. They make special paint for glass, check w/art stores.

**Fabric** - Golden's Gac 900 added to your medium.

**Fun foam** - Use felt tip pen.

**Photos** - Gouache or Gac 200 + medium. (first test on bad photo if possible)

**Gel pens for the shiny, glossy surfaces like stars, hearts etc.** used for seasonal decorating.

**Artificial plants** - Paint pens & felt tip pens are fast & easy. Gac + medium will work too.





## The Inside Curve: Drawn Letters

Workshop with Julie Wildman

**In-Person Workshop**  
Four Hills Clubhouse  
Albuquerque, New Mexico

**Saturday and Sunday,**  
**April 22–23, 2023**

*Suitable for beginners and  
experienced alike.*

This playful hand was created several years ago while I was a student in a workshop. I was working on a specific piece and the instructor noticed I was keeping an inside curve on the letters with outside angular lines.

Later, in another workshop, I pulled out that piece and designed the 'Niente Senza Gioia' piece you see in my sample (left).

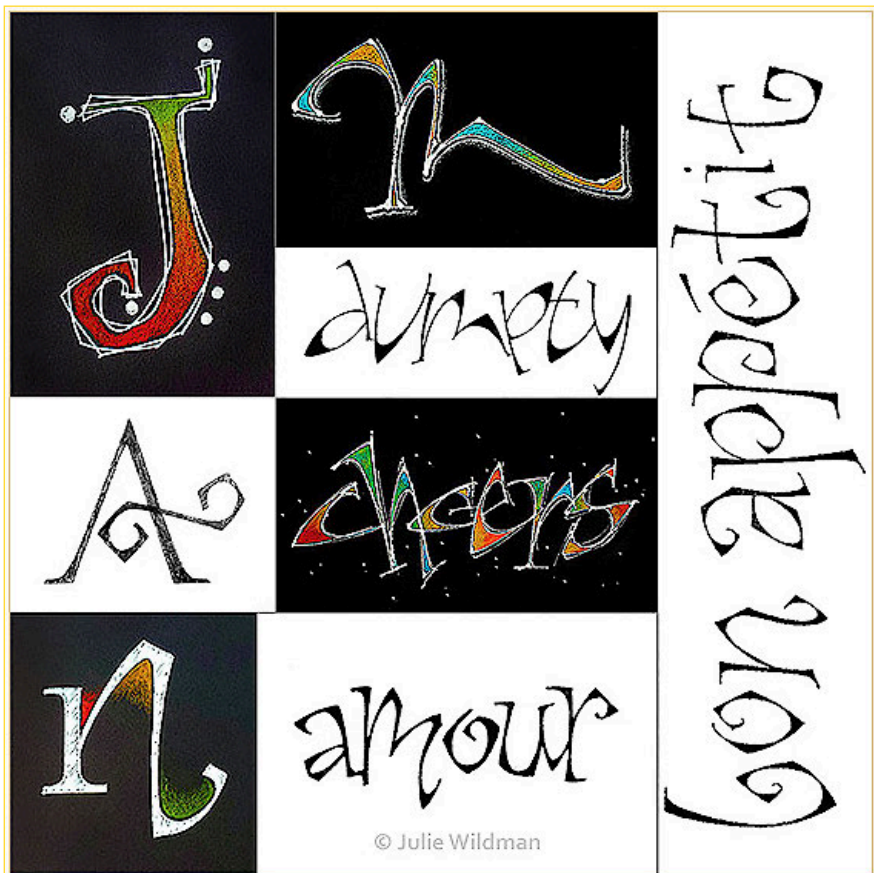
The distinctive features of the letterforms are the inside curve, while the outer lines of the letters are angular. How that is achieved is where the fun comes in! These letters are primarily meant to be drawn, not lettered with a specific tool. However, once students understand the underlying structure, these built-up letters can lend themselves to a variety of applications.

Together we will learn the basic forms, then branch out into variations. We will work with pencil, colored pencil, various inks, watercolors and metallics on an assortment of papers. We will also try a few compositions, working with layout and design principles to achieve some interesting results.

Julie enthusiastically shares her love of "beautiful writing" with young and old by teaching calligraphy for staff-development classes, on-site promotional events, community programs and personal growth workshops throughout the Chicago area, United States, and Canada. And now with Zoom classes, she has taught students from more than 22 countries around the world.

### TO REGISTER

<https://www.escribiente.org/workshops.html>





# LITERALLY LETTERS

Ghost Ranch  
Abiquiu, New Mexico  
June 4 – 10, 2023

Enter the world where words and art  
and nature collide! *Literally Letters*  
is a learning experience like no other!  
Beth House and Amy Jones work  
all year to make this an unforgettable  
creative lettering experience.

[Ghost Ranch Literally Letters Link](#)  
[beth.house107@gmail.com](mailto:beth.house107@gmail.com)

Wacky  
Books &  
Curious Letters  
Elizabeth McKee

Beginning  
Blackletter  
GOTHIC  
Kate Van Dyke

IT'S A SIGN!  
Creative and  
Practical  
approach to casual  
Sign Writing  
Layout & Design  
Heather  
Martinez

Literally Letters  
GHOST RANCH  
June 4-10, 2023  
[ghost ranch.org](http://ghost ranch.org)



Dunklone, Catem  
lating the hands and  
and air in an an an  
O high 2 yula  
un hachon adn  
if wun is an 2 and son dr

Artists  
WANTED  
TO LIVE THE





## The Many Faces of Gothic (Blackletter)

### Escribiente March Membership

#### Presentation by Kate VanDyke

Gothic has been around longer than any other Western hand except Roman capitals—some 900 years. Naturally it has evolved in form and use over the centuries. Especially in the past century, lettering artists have been playing with these graphic shapes in ways never imagined by the scribes of the Middle Ages.

Kate has studied calligraphy for a long time with many instructors, including Ward Dunham, Sheila Waters, Hans-Joachim Burgert, and Donald Jackson. She has taught beginners in classes for Capital City Scribes, Waco Calligraphy Guild, San Antonio Calligraphy Guild and Austin Museum of Art School, as well as community education classes.

She has had her work accepted in the Letter Arts Review annual juried exhibit, and has exhibited at Austin City Hall, Austin-Bergstrom Airport and several local venues.

Students are looking forward to Kate's Beginning [Blackletter Gothic class](#) at Ghost Ranch in June.

Follow Kate on Instagram: [@callikatev](#)





## BULLETIN BOARD

We welcome new members — both young and old!



It's all fun & games  
until someone puts an /out

Zoom membership meetings are recorded and are available for one week following each meeting. Watch your email from Bill Kemp for the link.

## OUR NEXT BIG THING

◆ Julie Wildman Workshop ◆  
*Inside Curve - Drawn Letters*  
April 22<sup>nd</sup> and 23<sup>rd</sup>

◆ Weathergrams ◆  
May 20<sup>th</sup>  
**Open Space Visitor Center** —  
6500 Coors Blvd NW  
in support of the annual  
New Mexico State Poetry Society  
and LIBROS book arts guild's  
**Poets' Picnic**

◆ Quote Swap ◆  
(See Page 14)

Subscribe to  
[Escribiente YouTube](#)  
channel to view replays of  
past meeting programs.

Follow us on Social Media:  
[Escribiente Facebook](#)  
[Escribiente on Instagram](#)

We welcome guests and the  
public who have interest in  
learning more about the  
fine art of beautiful lettering.

NEXT VIRTUAL  
MEMBERSHIP MEETING

Wednesday, **April 5<sup>th</sup>** 6:30PM  
Pointed Pen demo with Bill Kemp

Wednesday, **May 3<sup>rd</sup>** 6:30PM  
Nature Journals with Caryl McHarney

Wednesday, **June 7<sup>th</sup>** 6:30 PM  
Padlet Tree Quote Exchange

**Next in-person meeting**  
We welcome Show & Share  
calligraphic art at our in-person  
meetups on the third Saturday  
of each month, 1:00—3:00PM, at  
Heights Cumberland Presbyterian  
Church - 8600 Academy NE

Escribiente's Newsletter is published three or four times per year. Articles and images from this Newsletter are covered by copyright and may not be reprinted without permission.

Our newsletter is one of the many things that keeps this well-inked machine flourishing. Send information and/or suggestions to lynda33 at hotmail.com. The power of the friendship and passion we have in common is all about caring and sharing. Escribiente is the channel for that to happen.

This newsletter is for and about you, so it's only as good as you make it and contribute to it. Any information and/or artwork you have created is welcome! Classes you've attended, tidbits of news, awards you've won, book reviews, a favorite material you can't wait to tell everyone about, upcoming shows, classes you attend as a teacher or student, etc. This is our connection with the calligraphic world in New Mexico and beyond. We always welcome your input, comments, or suggestions. We hunger for the companionship of artists who speak our quirky language and lingo.

Founded in 1978, Escribiente is a non-profit organization of persons dedicated to the advancement and promotion of calligraphy. Virtual meetings are held at 6:30 on the first Wednesday of each month, except January and July. Meeting access link is sent to members via email in advance. In-person meetings take place on the third Saturday of each month at Heights Cumberland Presbyterian Church, 8600 Academy NE.

Yearly dues are \$30, are not pro-rated, and are payable in July. Members receive discounts to attend workshops, along with access to our extensive library collection. Newsletter back issues can be viewed on our website [escribiente.org](http://escribiente.org). Members also receive a discount at Artisan art supply store in Albuquerque. Dues should be mailed to: Escribiente, PO Box 8884, Albuquerque, NM 87190.